

Datasheet for ABIN5569923
MDH2 Protein (AA 25-338) (His tag)



[Go to Product page](#)

1 Image

Overview

Quantity:	50 µg
Target:	MDH2
Protein Characteristics:	AA 25-338
Origin:	Human
Source:	Escherichia coli (E. coli)
Protein Type:	Recombinant
Biological Activity:	Active
Purification tag / Conjugate:	This MDH2 protein is labelled with His tag.
Application:	SDS-PAGE (SDS), Functional Studies (Func)

Product Details

Purpose:	MDH2 (Human) Recombinant Protein
Sequence:	MGSSHHHHHH SGLVPRGSH MAKVAVLGAS GGIGQPLSLL LKNSPLVSRL TLYDIAHTPG VAADLSHIET KAAVKGYLGP EQLPDCLKGC DVVWIPAGVP RKPGMTRDDL FNTNATIVAT LTAACAQHCP EAMICVIANP VNSTIPITAE VFKKHGVYNP NKIFGVTTLD IVRANTFVAE LKGLDPAVN VPIGGHAGK TIPLISQCT PKVDFFPQDQL TALTGRIQEA GTEVVKAKAG AGSATLSMAY AGARFVFSLV DAMNGKEGVV ECSFVKSQET ECTYFSTPLL LGKKGIEKNL GIGKVSSFEE KMISDAIPEL KASIKKGEDF VKTLK
Characteristics:	Human MDH2 (NP_005909, 25 a.a. - 338 a.a.) partial recombinant protein with His tag expressed in <i>Escherichia coli</i> . This product with activity data is belong to bioactive protein.

Product Details

Purification: Escherichia coli expression system

Target Details

Target: MDH2

Alternative Name: MDH2 ([MDH2 Products](#))

Background: Full Gene Name: malate dehydrogenase 2, NAD (mitochondrial)
Synonyms: M-MDH,MDH,MGC:3559,MOR1

Gene ID: 4191

Application Details

Application Notes: Optimal working dilution should be determined by the investigator.

Comment: *Escherichia coli* expression system
Product Quality tested by: Loading 3 ug protein in 15% SDS-PAGE

Restrictions: For Research Use only

Handling

Format: Liquid

Concentration: 1 mg/mL

Buffer: In 20 mM Tris-HCl buffer, pH 7.5 (10 % glycerol).

Handling Advice: Aliquot to avoid repeated freezing and thawing.

Storage: -20 °C,-80 °C

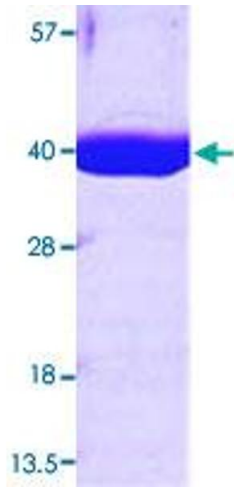


Image 1.