



[Go to Product page](#)

Datasheet for ABIN5569963
G-CSF Protein (AA 31-204)

1 Image

Overview

Quantity:	50 µg
Target:	G-CSF (CSF3)
Protein Characteristics:	AA 31-204
Origin:	Human
Source:	Escherichia coli (E. coli)
Protein Type:	Recombinant
Biological Activity:	Active
Application:	SDS-PAGE (SDS), Functional Studies (Func)

Product Details

Purpose:	CSF3 (Human) Recombinant Protein
Sequence:	MTPLGPASSL PQSFLKCLE QVRKIQGDGA ALQEKLCAATY KLCHPEELVL LGHSLGIPWA PLSSCPSQAL QLAGCLSQLH SGLFLYQGLL QALEGISPEL GPTLDTLQLD VADFATTIWQ QMEELGMAPA LQPTQGAMPA FASAFQRRAG GVLVASHLQS FLEVSRYRLR HLAQP
Characteristics:	Human CSF3 (NP_757373, 31 a.a. - 204 a.a.) partial recombinant protein expressed in <i>Escherichia coli</i> . This product with activity data is belong to bioactive protein.
Purification:	Escherichia coli expression system

Target Details

Target:	G-CSF (CSF3)
---------	--------------

Target Details

Alternative Name:	CSF3 (CSF3 Products)
Background:	Full Gene Name: colony stimulating factor 3 (granulocyte) Synonyms: G-CSF,GCSF,MGC45931
Gene ID:	1440
Pathways:	Cellular Response to Molecule of Bacterial Origin, Regulation of Actin Filament Polymerization

Application Details

Application Notes:	Optimal working dilution should be determined by the investigator.
Comment:	<i>Escherichia coli</i> expression system Product Quality tested by: Loading 3 ug protein in 15% SDS-PAGE
Restrictions:	For Research Use only

Handling

Format:	Liquid
Concentration:	0.5 mg/mL
Buffer:	In PBS, pH 7.4 (10 % glycerol).
Handling Advice:	Aliquot to avoid repeated freezing and thawing.
Storage:	-20 °C,-80 °C

Images

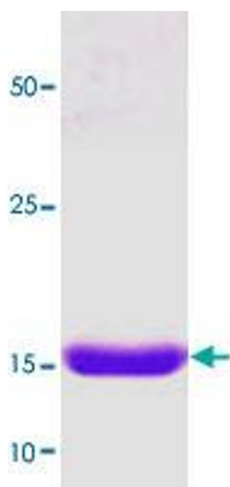


Image 1.