



Datasheet for ABIN5570074

LATS2 Protein (AA 553-1088) (GST tag)



[Go to Product page](#)

2 Images

Overview

Quantity:	5 µg
Target:	LATS2
Protein Characteristics:	AA 553-1088
Origin:	Human
Source:	Insect cells (Sf21)
Protein Type:	Recombinant
Biological Activity:	Active
Purification tag / Conjugate:	This LATS2 protein is labelled with GST tag.
Application:	SDS-PAGE (SDS), Functional Studies (Func)

Product Details

Purpose:	LATS2 (Human) Recombinant Protein
Characteristics:	Human LATS2 (NP_055387.2, 553 a.a. - 1088 a.a.) partial recombinant protein with GST tag expressed in baculovirus infected Sf21 cells. This product with activity data is belong to bioactive protein.
Purification:	Baculovirus infected insect cell (Sf21) expression system

Target Details

Target:	LATS2
Alternative Name:	LATS2 (LATS2 Products)

Target Details

Background:	Full Gene Name: LATS, large tumor suppressor, homolog 2 (Drosophila) Synonyms: FLJ13161,KPM
Gene ID:	26524

Application Details

Application Notes:	Optimal working dilution should be determined by the investigator.
Comment:	Baculovirus infected insect cell (Sf21) expression system Product Quality tested by: Loading 1 ug protein in SDS-PAGE
Restrictions:	For Research Use only

Handling

Format:	Liquid
Buffer:	In 50 mM Tris-HCl, 150 mM NaCl, pH 7.5 (0.1 % CHAPS, 1 mM DTT, 10 % glycerol)
Preservative:	Dithiothreitol (DTT)
Precaution of Use:	This product contains Dithiothreitol (DTT): a POISONOUS AND HAZARDOUS SUBSTANCE which should be handled by trained staff only.
Handling Advice:	Aliquot to avoid repeated freezing and thawing.
Storage:	-80 °C

Images

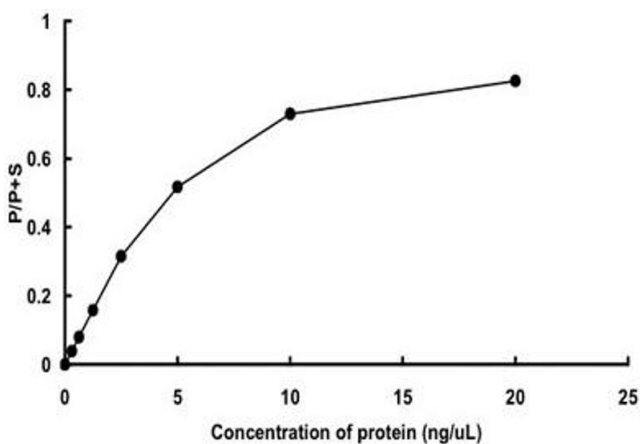


Image 1.

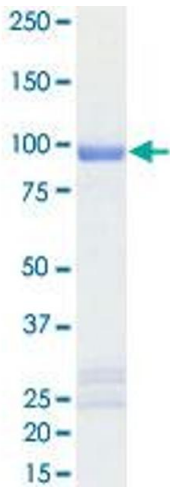


Image 2.