



[Go to Product page](#)

Datasheet for ABIN5570086

## EPH Receptor A2 Protein (EPHA2) (AA 585-976) (His-GST)

### 2 Images

#### Overview

Quantity:	100 µg
Target:	EPH Receptor A2 (EPHA2)
Protein Characteristics:	AA 585-976
Origin:	Human
Source:	Insect cells (Sf9)
Protein Type:	Recombinant
Biological Activity:	Active
Purification tag / Conjugate:	This EPH Receptor A2 protein is labelled with His-GST.
Application:	SDS-PAGE (SDS), Functional Studies (Func)

#### Product Details

Purpose:	EPHA2 (Human) Recombinant Protein
Characteristics:	Human EPHA2 (NM_004431.2, 585 a.a. - 976 a.a.) partial recombinant protein with GST-His tag expressed in Sf9 cells. This product with activity data is belong to bioactive protein.
Purification:	Insect cell (Sf9) expression system

#### Target Details

Target:	EPH Receptor A2 (EPHA2)
Alternative Name:	EPHA2 ( <a href="#">EPHA2 Products</a> )

## Target Details

---

Background: Full Gene Name: EPH receptor A2  
Synonyms: ECK

---

Gene ID: 1969

---

Pathways: [RTK Signaling](#)

## Application Details

---

Application Notes: Optimal working dilution should be determined by the investigator.

---

Comment: Insect cell (Sf9) expression system  
Product Quality tested by: 2 ug/lane SDS-PAGE Stained with Coomassie Blue

---

Restrictions: For Research Use only

## Handling

---

Format: Liquid

---

Concentration: 0.505 µg/µL

---

Buffer: In 50 mM Tris-HCl, 100 mM NaCl, pH 8.0. (5 mM DTT, 4 mM reduced glutathione, 20 % glycerol)

---

Preservative: Dithiothreitol (DTT)

---

Precaution of Use: This product contains Dithiothreitol (DTT): a POISONOUS AND HAZARDOUS SUBSTANCE which should be handled by trained staff only.

---

Handling Advice: Aliquot to avoid repeated freezing and thawing.

---

Storage: -80 °C

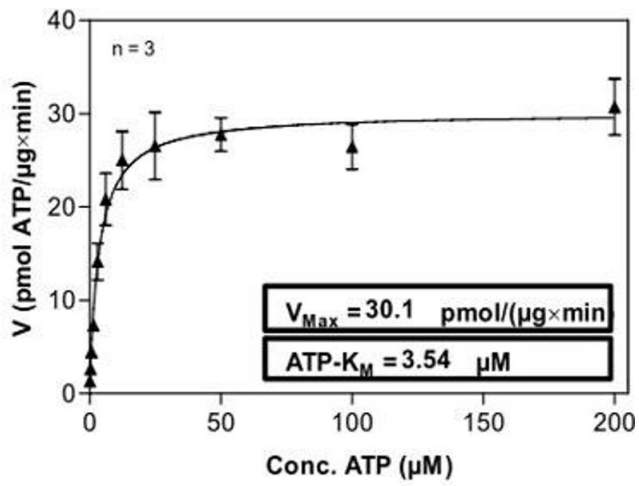


Image 1.

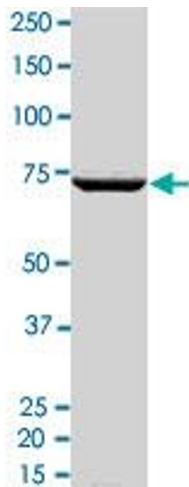


Image 2.