



[Go to Product page](#)

Datasheet for ABIN5570432

LDOC1L Protein (AA 1-239) (His tag)

1 Image

Overview

Quantity:	100 µg
Target:	LDOC1L
Protein Characteristics:	AA 1-239
Origin:	Human
Source:	Escherichia coli (E. coli)
Protein Type:	Recombinant
Purification tag / Conjugate:	This LDOC1L protein is labelled with His tag.
Application:	SDS-PAGE (SDS)

Product Details

Purpose:	LDOC1L (Human) Recombinant Protein
Sequence:	MGSSHHHHHH SGLVPRGSH MGSHMVQPQT SKAESPALAA SPNAQMDDVI DTLTSLRLTN SALRREASTL RAEKANLTNM LESVMAELTL LRTRARIPGA LQITPPISSI TSNTRPMTT PPTSLPEPFS GDPGRLAGFL MQMDRFMIFQ ASRFPGEAER VAFLVSRLTG EAEKWAIPHM QPDSPLRNNY QGFLAELRRT YKSPLRHARR AQIRKTSASN RAVRERQMLC RQLASAGTGP CPVHPASNGT SPAPALPARA RNL
Characteristics:	Human LDOC1L (NP_115663, 1 a.a. - 239 a.a.) full-length recombinant protein with His tag expressed in <i>Escherichia coli</i> .
Purification:	Escherichia coli expression system

Target Details

Target:	LDOC1L
Alternative Name:	LDOC1L (LDOC1L Products)
Background:	Full Gene Name: leucine zipper, down-regulated in cancer 1-like Synonyms: DKFZp761017121,Mar6,Mart6,dJ1033E15.2
Gene ID:	84247

Application Details

Application Notes:	Optimal working dilution should be determined by the investigator.
Comment:	<i>Escherichia coli</i> expression system Product Quality tested by: 3 ug/lane in 15% SDS-PAGE Stained with Coomassie Blue. Due to the protein nature, dimmers and multimers may be observed.
Restrictions:	For Research Use only

Handling

Format:	Liquid
Buffer:	In 20 mM Tris-HCl buffer, 0.1 M NaCl, 1 mM EDTA, pH 8.0 (40 % glycerol, 2 mM DTT, 0.1 mM PMSF).
Preservative:	Dithiothreitol (DTT), PMSF
Precaution of Use:	This product contains Dithiothreitol (DTT): a POISONOUS AND HAZARDOUS SUBSTANCE which should be handled by trained staff only.
Handling Advice:	Aliquot to avoid repeated freezing and thawing.
Storage:	-20 °C,-80 °C

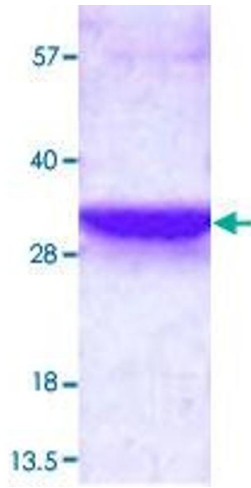


Image 1.