

Datasheet for ABIN5570503
PPM1A Protein (AA 1-382)



[Go to Product page](#)

1 Image

Overview

Quantity:	100 µg
Target:	PPM1A
Protein Characteristics:	AA 1-382
Origin:	Human
Source:	Escherichia coli (E. coli)
Protein Type:	Recombinant
Biological Activity:	Active
Application:	SDS-PAGE (SDS), Functional Studies (Func)

Product Details

Purpose:	PPM1A (Human) Recombinant Protein
Sequence:	MRGSHHHHHH GMASMTGGQQ MGRDLYDDDD KDRWILMGAF LDKPKMEKHN AQQQGNGLRY GLSSMQGWRV EMEDAHTAVI GLPSGLESWS FFAVYDGHAG SQVAKYCCEH LLDHITNNQD FKGSAGAPSV ENVKNGIRTG FLEIDEHMRV MSEKKHGADR SGSTAVGVLI SPQHTYFINC GDSRGLLCRN RKVHFFTQDH KPSNPLEKER IQNAGGSVMI QRVNGSLAVS RALGDFDYKC VHGKGPTEQL VSPEPEVHDI ERSEDDQFI ILACDGIWDV MGNEELCDFV RSRLEVTDDL EKVCNEVVDI CLYKGSRDNM SVILICFPNA PKVSPEAVKK EAELDKYLEC RVEEIIKKQG EGVPDLVHVM RTLASENIPS LPPGGELASK RNVIEAVYNR LNPYKNDTDD STSTDDMW
Characteristics:	Human PPM1A (NP_066283, 1 a.a. - 382 a.a.) full-length recombinant protein expressed in <i>Escherichia coli</i> . This product with activity data is belong to bioactive protein.

Product Details

Purification: Escherichia coli expression system

Target Details

Target: PPM1A

Alternative Name: PPM1A ([PPM1A Products](#))

Background: Full Gene Name: protein phosphatase 1A (formerly 2C), magnesium-dependent, alpha isoform
Synonyms: FLJ42306,MGC9201,PP2C-ALPHA,PP2CA

Gene ID: 5494

Application Details

Application Notes: Optimal working dilution should be determined by the investigator.

Comment: ***Escherichia coli*** expression system
Product Quality tested by: Loading 3 ug protein in 10% SDS-PAGE

Restrictions: For Research Use only

Handling

Format: Liquid

Concentration: 1 mg/mL

Buffer: In 10 mM Tris-HCl, 50 mM NaCl, 1 mM MnCl₂, pH 7.5 (2 mM DTT, 20 % glycerol).

Preservative: Dithiothreitol (DTT)

Precaution of Use: This product contains Dithiothreitol (DTT): a POISONOUS AND HAZARDOUS SUBSTANCE which should be handled by trained staff only.

Handling Advice: Aliquot to avoid repeated freezing and thawing.

Storage: -20 °C,-80 °C

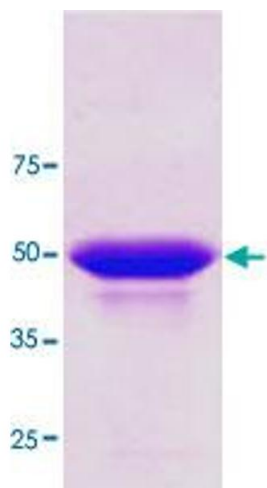


Image 1.