



[Go to Product page](#)

Datasheet for ABIN5570545
SMAD2 Protein (AA 1-467) (His tag)

1 Image

Overview

Quantity:	100 µg
Target:	SMAD2
Protein Characteristics:	AA 1-467
Origin:	Human
Source:	Escherichia coli (E. coli)
Protein Type:	Recombinant
Purification tag / Conjugate:	This SMAD2 protein is labelled with His tag.
Application:	SDS-PAGE (SDS)

Product Details

Purpose:	SMAD2 (Human) Recombinant Protein
Sequence:	MGSSHHHHHH SSGLVPRGSH MSSILPFTTP VVKRLLGWKK SAGGSGGAGG GEQNGQEEKW CEKAVKSLVK KLKKTGRLDE LEKAITTQNC NTKCVTIPST CSEIWGLSTP NTIDQWDTTG LYSFSEQTRS LDGRLQVSHR KGLPHVIYCR LWRWPDLSH HELKAIENCE YAFNLKKDEV CVNPYHYQRV ETPVLPPVLV PRHTEITEL PPLDDYTHSI PENTNFPAGI EPQSNYIPET PPPGYISEDG ETSQQLNQS MDTGSPAELS PTTLSPVNHS LDLQPVTYSE PAFWCSIAYY ELNQRVGETF HASQPSLTVD GFTDPSNSER FCLGLLSNVN RNATVEMTRR HIGRGVRLYY IGGEVFAECL SDSAIFVQSP NCNQRYGWHP ATVCKIPPGC NLKIFNNQEF AALLAQSVNQ GFEAVYQLTR MCTIRMSFVK GWGAEYRRQT VTSTPCWIEL HLNGLPLQWLD KVLTMGSPS VRCSSMS
Characteristics:	Human SMAD2 (NP_005892, 1 a.a. - 467 a.a.) full-length recombinant protein with His tag expressed in <i>Escherichia coli</i> .

Product Details

Purification: Escherichia coli expression system

Target Details

Target: SMAD2

Alternative Name: SMAD2 ([SMAD2 Products](#))

Background: Full Gene Name: SMAD family member 2
Synonyms: JV18,JV18-1,MADH2,MADR2,MGC22139,MGC34440,hMAD-2,hSMAD2

Gene ID: 4087

Pathways: [Cell Division Cycle](#), [Hormone Transport](#), [Chromatin Binding](#), [Protein targeting to Nucleus](#)

Application Details

Application Notes: Optimal working dilution should be determined by the investigator.

Comment: ***Escherichia coli*** expression system
Product Quality tested by: Loading 3 ug protein in 15% SDS-PAGE

Restrictions: For Research Use only

Handling

Format: Liquid

Concentration: 0.5 mg/mL

Buffer: In 20 mM Tris-HCl buffer, 100 mM NaCl, pH 8.0 (20 % glycerol).

Handling Advice: Aliquot to avoid repeated freezing and thawing.

Storage: -20 °C,-80 °C

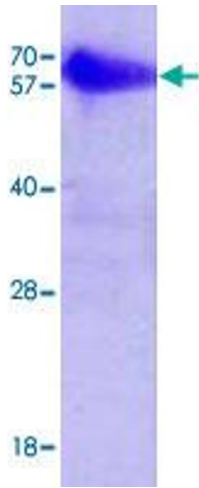


Image 1.