

Datasheet for ABIN5570730

Prostate Specific Antigen Protein (PSA) (Native Form)[Go to Product page](#)**1** Image

Overview

Quantity:	100 µg
Target:	Prostate Specific Antigen (PSA)
Protein Characteristics:	Native Form
Origin:	Human
Source:	Human
Protein Type:	Native

Product Details

Purpose:	KLK3 (Human) Native Protein
Characteristics:	Human KLK3 native protein from human seminal fluid.
Purification:	Native protein purified from human seminal fluid.

Target Details

Target:	Prostate Specific Antigen (PSA)
Alternative Name:	KLK3 (PSA Products)
Background:	Full Gene Name: kallikrein-related peptidase 3 Synonyms: APS,KLK2A1,PSA,hK3
Gene ID:	354
Pathways:	Complement System

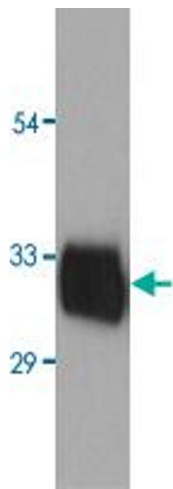
Application Details

Comment:	Native protein purified from human seminal plasma
Restrictions:	For Research Use only

Handling

Format:	Liquid
Buffer:	In 0.05 M sodium phosphate, 0.15 M NaCl, pH 7.5 (0.09 % sodium azide).
Preservative:	Sodium azide
Precaution of Use:	This product contains Sodium azide: a POISONOUS AND HAZARDOUS SUBSTANCE which should be handled by trained staff only.
Handling Advice:	Aliquot to avoid repeated freezing and thawing.
Storage:	4 °C

Images



Western Blotting

Image 1. Western Blot analysis of KLK3 (Human) Native Protein purified from human seminal plasma at 1 mg/ml with 1 ug/ml KLK3 monoclonal antibody, clone A67-B/E3 .