

Datasheet for ABIN5570960

GM-CSF Protein**2** Images[Go to Product page](#)

Overview

Quantity:	20 µg
Target:	GM-CSF (CSF2)
Origin:	Rat
Source:	Escherichia coli (E. coli)
Protein Type:	Recombinant
Biological Activity:	Active
Application:	SDS-PAGE (SDS), Functional Studies (Func)

Product Details

Purpose:	Csf2 (Rat) Recombinant Protein
Sequence:	MAPTRSPNPV TRPWKHVDAI KEALSLNDM RALENEKNED VDIISNEFSI QRPTCVQTRL KLYKQGLRGN LTKLNGALTM IASHYQTNCP PTPETDCEIE VTTFEDFIKN LKGFLFDIPF DCWKPVQK
Characteristics:	Rat Csf2 recombinant protein expressed in <i>Escherichia coli</i> . This product with activity data is belong to bioactive protein.
Purification:	Escherichia coli expression system

Target Details

Target:	GM-CSF (CSF2)
Alternative Name:	Csf2 (CSF2 Products)
Background:	Full Gene Name: colony stimulating factor 2 (granulocyte-macrophage)

Target Details

	Synonyms: Gm-csf,Gmcsf
Gene ID:	116630
Pathways:	JAK-STAT Signaling, Cellular Response to Molecule of Bacterial Origin

Application Details

Application Notes:	Optimal working dilution should be determined by the investigator.
Comment:	<i>Escherichia coli</i> expression system Product Quality tested by: 1 ug/lane in 4-20% Tris-Glycine gel stained with Coomassie Blue
Restrictions:	For Research Use only

Handling

Format:	Lyophilized
Buffer:	Lyophilized from 20 mM NaHCO ₃
Handling Advice:	Aliquot to avoid repeated freezing and thawing.
Storage:	-20 °C

Images

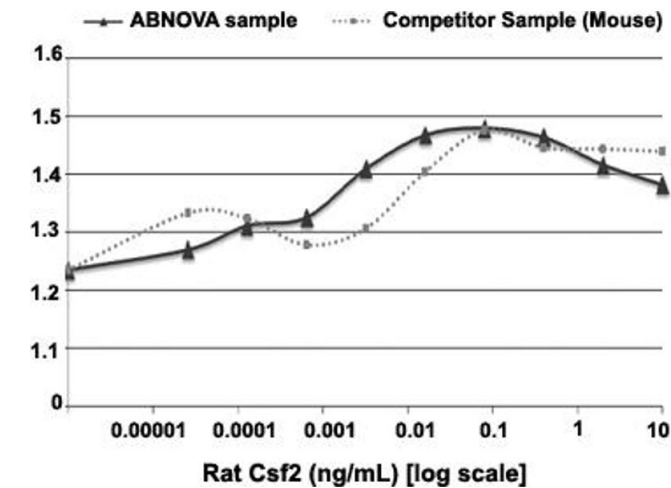
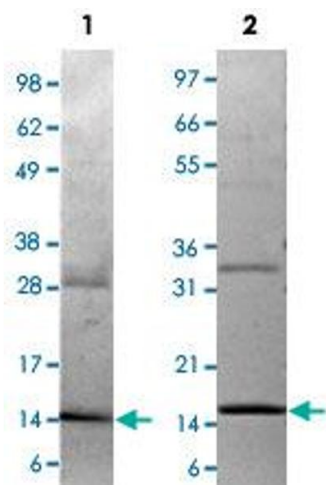


Image 1. Serial dilutions of rat Csf2, starting at 10 ng/mL, were added to FDCP-1 cells. After 91 hours, cell proliferation was measured and the linear portion of the curve was used to calculate the ED50.



Western Blotting

Image 2. Lane 1: non-reducing conditions Lane 2: reducing conditions