



[Go to Product page](#)

Datasheet for ABIN5571325

EBI3 Protein

1 Image

Overview

Quantity:	20 µg
Target:	EBI3 (IL-27b)
Origin:	Human
Source:	Escherichia coli (E. coli)
Protein Type:	Recombinant
Application:	SDS-PAGE (SDS)

Product Details

Purpose:	EBI3 (Human) Recombinant Protein
Sequence:	MRKGPPAALT LPRVQCRASR YPIAVDCSWT LPPAPNSTSP VSFIATYRLG MAARGHSWPC LQQTPTSTSC TITDVQLFSM APYVLNVTAV HPWGSSSSSFV PFITEHIIKP DPPEGVRLSP LAERQLQVQW EPPGSWPFPE IFSLKYWIRY KRQGAARFHR VGPIEATSF I LRAVRPRARY YVQVAAQDLT DYGELSDWSL PATATMSLGK
Characteristics:	Human EBI3 recombinant protein expressed in <i>Escherichia coli</i> .
Purification:	Escherichia coli expression system

Target Details

Target:	EBI3 (IL-27b)
Alternative Name:	EBI3 (IL-27b Products)
Background:	Full Gene Name: Epstein-Barr virus induced 3 Synonyms: IL27B

Target Details

Gene ID: 10148

Application Details

Application Notes: Optimal working dilution should be determined by the investigator.

Comment: *Escherichia coli* expression system
Product Quality tested by: 1 ug/lane in 4-20% Tris-Glycine gel Stained with Coomassie Blue

Restrictions: For Research Use only

Handling

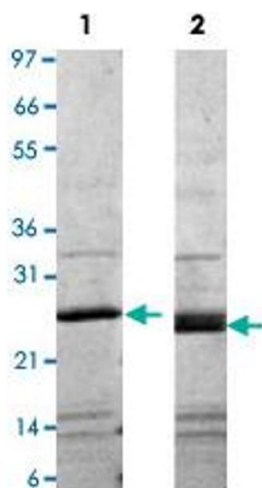
Format: Lyophilized

Buffer: Lyophilized from a sterile (0.2 micron) filtered aqueous solution (0.1 % Trifluoroacetic Acid (TFA), 0.5 % mannitol)

Handling Advice: Product Reconstitution: Sterile 10 mM HCl at 0.1 mg/mL
Centrifuge vial before opening. Suspend the product by gently pipetting the above recommended solution down the sides of the vial. DO NOT VORTEX. Allow several minutes for complete reconstitution. For prolonged storage, dilute to working aliquots in a 0.1% BSA solution, store at -80°C and avoid repeat freeze thaws. Upon reconstitution, a small amount of visible precipitate can be expected. A 10% overfill has been added to the total material vial to compensate for this loss.

Storage: -20 °C

Images



Western Blotting

Image 1. Lane 1: non-reducing conditions Lane 2: reducing conditions