

Datasheet for ABIN5571572

anti-RuvA antibody[Go to Product page](#)**1** Image

Overview

Quantity:	100 µL
Target:	RuvA
Reactivity:	E. coli
Host:	Rabbit
Clonality:	Polyclonal
Conjugate:	This RuvA antibody is un-conjugated
Application:	ELISA, Western Blotting (WB)

Product Details

Purpose:	Rabbit polyclonal antibody raised against full length recombinant <i>Escherichia coli</i> RuvA.
Immunogen:	Recombinant protein corresponding to full length <i>Escherichia coli</i> RuvA.
Cross-Reactivity:	E. coli

Target Details

Target:	RuvA
Abstract:	RuvA Products
Background:	Full Gene Name: component of RuvABC resolvase, regulatory subunit Synonyms: ECK1862, JW1850
Gene ID:	946369
UniProt:	P0A809

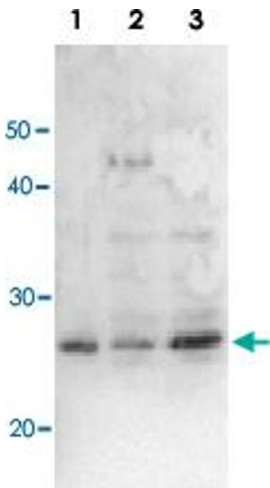
Application Details

Application Notes:	Western Blot (1:3000) The optimal working dilution should be determined by the end user.
Restrictions:	For Research Use only

Handling

Format:	Liquid
Buffer:	In antiserum (0.05 % sodium azide)
Preservative:	Sodium azide
Precaution of Use:	This product contains Sodium azide: a POISONOUS AND HAZARDOUS SUBSTANCE which should be handled by trained staff only.
Storage:	4 °C,-80 °C
Storage Comment:	Store at 4°C. For long term storage store at -80°C. Aliquot to avoid repeated freezing and thawing.

Images



Western Blotting

Image 1. Detection of RuvA (22kD) protein by Western blotting using this antibody. Lane1 : RuvA protein 0.8 ng. Lane2 : E. coli AB1157 crude extract. Lane3 : E. coli AB1157 LexA mutant crude extract. Expression of RuvA is enhanced by LexA mutation.