

Datasheet for ABIN5571574

**anti-RuvC antibody**[Go to Product page](#)**1** Image

## Overview

Quantity:	100 µL
Target:	RuvC
Reactivity:	E. coli
Host:	Rabbit
Clonality:	Polyclonal
Conjugate:	This RuvC antibody is un-conjugated
Application:	Western Blotting (WB)

## Product Details

Purpose:	Rabbit polyclonal antibody raised against full length recombinant <i>Escherichia coli</i> RuvC.
Immunogen:	Recombinant protein corresponding to full length <i>Escherichia coli</i> RuvC.
Cross-Reactivity:	E. coli

## Target Details

Target:	RuvC
Alternative Name:	ruvC ( <a href="#">RuvC Products</a> )
Background:	Full Gene Name: component of RuvABC resolvase, endonuclease Synonyms: ECK1864,JW1852
Gene ID:	946378
UniProt:	<a href="#">P0A814</a>

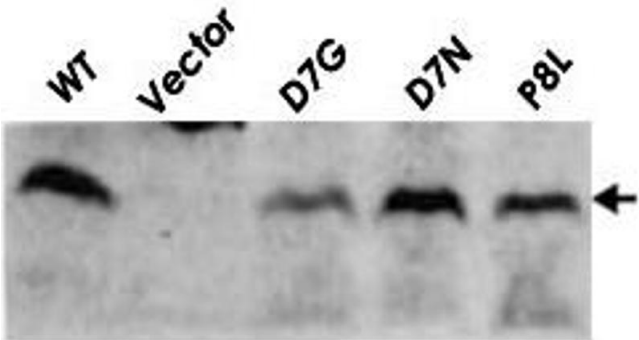
Application Details

Application Notes:	Western Blot (1:3000) The optimal working dilution should be determined by the end user.
Restrictions:	For Research Use only

Handling

Format:	Liquid
Buffer:	In antiserum (0.05 % sodium azide)
Preservative:	Sodium azide
Precaution of Use:	This product contains Sodium azide: a POISONOUS AND HAZARDOUS SUBSTANCE which should be handled by trained staff only.
Storage:	4 °C,-80 °C
Storage Comment:	Store at 4°C. For long term storage store at -80°C. Aliquot to avoid repeated freezing and thawing.

Images



Western Blotting

**Image 1.** Detection of RuvC (19kD) proteins in the cell extracts of E. coli carrying the plasmids which encode the indicated Mutant RuvC proteins by Western blotting using RuvC polyclonal antibody . WT : wild type RuvC protein. vector : vector plasmid. D7G, D7N, P8L : mutant RuvC proteins.