



Datasheet for ABIN5571744  
**anti-ABCB1 antibody (AA 621-650)**



[Go to Product page](#)

2 Images

Overview

Quantity:	100 µg
Target:	ABCB1
Binding Specificity:	AA 621-650
Reactivity:	Human, Mouse, Rat
Host:	Rabbit
Clonality:	Polyclonal
Conjugate:	This ABCB1 antibody is un-conjugated
Application:	Immunohistochemistry (Paraffin-embedded Sections) (IHC (p)), Immunohistochemistry (Frozen Sections) (IHC (fro))

Product Details

Purpose:	Rabbit polyclonal antibody raised against partial synthetic protein of human ABCB1.
Immunogen:	A synthetic peptide corresponding to amino acids 621-650 at internal region of human ABCB1.
Sequence:	IYFKLVMTQT AGNEVELENA ADESKSEIDA
Isotype:	IgG
Cross-Reactivity:	Human, Mouse, Rat

Target Details

Target:	ABCB1
Alternative Name:	ABCB1 ( <a href="#">ABCB1 Products</a> )

## Target Details

---

Background: Full Gene Name: ATP-binding cassette, sub-family B (MDR/TAP), member 1  
Synonyms: ABC20,CD243,CLCS,GP170,MDR1,MGC163296,P-GP,PGY1

---

Gene ID: 5243

---

## Application Details

---

Application Notes: Immunohistochemistry (Frozen sections) (0.5-1 µg/mL)  
Immunohistochemistry (Formalin/PFA-fixed paraffin-embedded sections) (0.5-1 µg/mL)  
The optimal working dilution should be determined by the end user.

---

Restrictions: For Research Use only

---

## Handling

---

Format: Lyophilized

---

Buffer: Lyophilized from 0.9 mg NaCl, 0.2 mg Na<sub>2</sub>HPO<sub>4</sub> (5 mg BSA, 0.05 mg sodium azide)

---

Preservative: Sodium azide

---

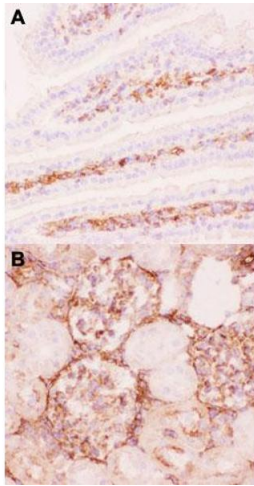
Precaution of Use: This product contains Sodium azide: a POISONOUS AND HAZARDOUS SUBSTANCE which should be handled by trained staff only.

---

Storage: 4 °C, -20 °C

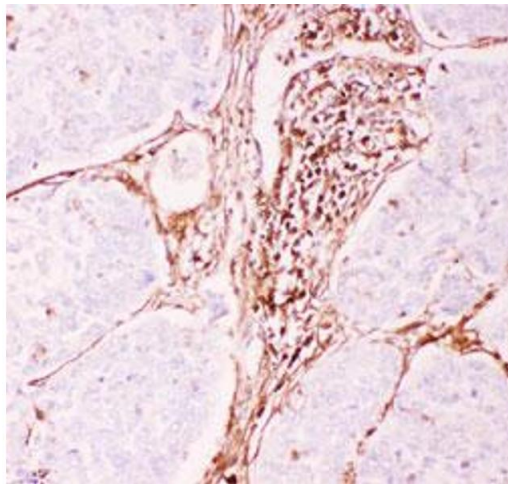
---

Storage Comment: Store at -20°C.  
After reconstitution with 0.2 mL of deionized water, store at 4°C for 1 month. For long term storage store at -20°C.  
Aliquot to avoid repeated freezing and thawing.



#### Immunohistochemistry

**Image 1.** Immunohistochemical staining (Frozen sections) of mouse intestine tissue (A) and rat kidney tissue (B) with ABCB1 polyclonal antibody under 0.5-1 ug/mL working concentration.



#### Immunohistochemistry

**Image 2.** Immunohistochemical staining (Formalin-fixed paraffin-embedded sections) of human lung cancer tissue with ABCB1 polyclonal antibody under 0.5-1 ug/mL working concentration.