

Datasheet for ABIN5571777  
**anti-ABCE1 antibody (C-Term)**[Go to Product page](#)

## 1 Image

## Overview

|                      |                                      |
|----------------------|--------------------------------------|
| Quantity:            | 100 µg                               |
| Target:              | ABCE1                                |
| Binding Specificity: | C-Term                               |
| Reactivity:          | Human                                |
| Host:                | Rabbit                               |
| Clonality:           | Polyclonal                           |
| Conjugate:           | This ABCE1 antibody is un-conjugated |
| Application:         | Western Blotting (WB), ELISA         |

## Product Details

|                   |   |
|-------------------|---|
| Purpose:          | Rabbit polyclonal antibody raised against synthetic peptide of ABCE1.             |
| Immunogen:        | A synthetic peptide corresponding to 15 amino acids at C-terminus of human ABCE1. |
| Cross-Reactivity: | Human   |

## Target Details

|                   |   |
|-------------------|---|
| Target:           | ABCE1   |
| Alternative Name: | ABCE1 ( <a href="#">ABCE1 Products</a> )  |
| Background:       | Full Gene Name: ATP-binding cassette, sub-family E (OABP), member 1<br>Synonyms: ABC38,OABP,RLI,RNASEL1,RNASELI,RNS4I |
| Gene ID:          | 6059  |

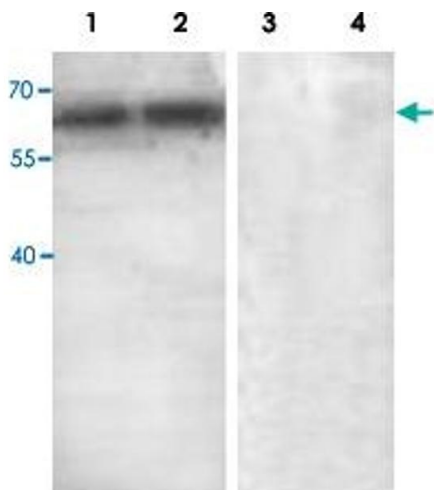
## Application Details

|                    |   |
|--------------------|---|
| Application Notes: | ELISA (1:160000)<br>Western Blot (1:500-1:1000)<br>The optimal working dilution should be determined by the end user. |
| Restrictions:      | For Research Use only   |

## Handling

|                    |   |
|--------------------|---|
| Format:            | Liquid  |
| Buffer:            | In buffer containing 0.02 % sodium azide  |
| Preservative:      | Sodium azide  |
| Precaution of Use: | This product contains Sodium azide: a POISONOUS AND HAZARDOUS SUBSTANCE which should be handled by trained staff only.  |
| Storage:           | 4 °C,-20 °C   |
| Storage Comment:   | Store at 4°C for three months. For long term storage store at -20°C.<br>Aliquot to avoid repeated freezing and thawing. |

## Images



### Western Blotting

**Image 1.** Western blot analysis with ABCE1 polyclonal antibody at 1 : 500 dilution. Lane 1 : 293 cell, no peptide blocked. Lane 2 : HeLa cell, no peptide blocked. Lane 3 : 293 cell, peptide blocked. Lane 4 : HeLa cell, peptide blocked.