



Datasheet for ABIN5571780  
**anti-ABCF3 antibody (AA 442-681)**



[Go to Product page](#)

2 Images

Overview

Quantity:	100 µg
Target:	ABCF3
Binding Specificity:	AA 442-681
Reactivity:	Human
Host:	Rabbit
Clonality:	Polyclonal
Conjugate:	This ABCF3 antibody is un-conjugated
Application:	ELISA, Western Blotting (WB), Immunohistochemistry (Paraffin-embedded Sections) (IHC (p))

Product Details

Purpose:	Rabbit polyclonal antibody raised against partial recombinant ABCF3.
Immunogen:	Recombinant protein corresponding to amino acids 442-681 of human ABCF3.
Specificity:	This antibody is specific to ABCF3.
Cross-Reactivity:	Human

Target Details

Target:	ABCF3
Alternative Name:	ABCF3 ( <a href="#">ABCF3 Products</a> )
Background:	Full Gene Name: ATP-binding cassette, sub-family F (GCN20), member 3 Synonyms: EST201864,FLJ11198

## Target Details

---

Gene ID: 55324

## Application Details

---

Application Notes: Western Blot (1:500-1:1000)  
Immunohistochemistry (1:100-1:500)  
ELISA (1:20000-1:80000)  
The optimal working dilution should be determined by the end user.

---

Restrictions: For Research Use only

## Handling

---

Format: Liquid

Buffer: In buffer containing 0.02 % sodium azide

Preservative: Sodium azide

Precaution of Use: This product contains Sodium azide: a POISONOUS AND HAZARDOUS SUBSTANCE which should be handled by trained staff only.

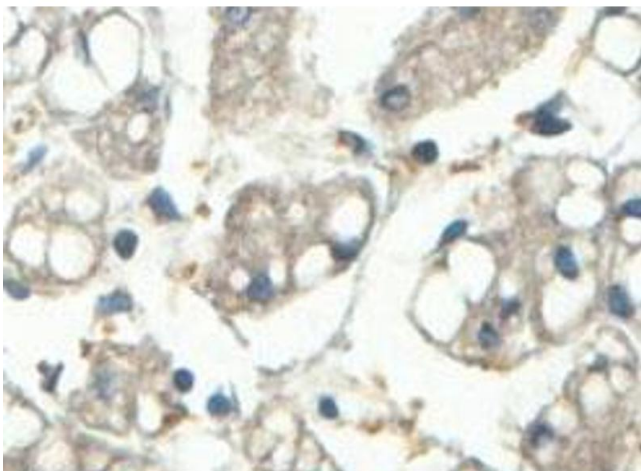
---

Storage: 4 °C,-20 °C

Storage Comment: Store at 4°C for three months. For long term storage store at -20°C.  
Aliquot to avoid repeated freezing and thawing.

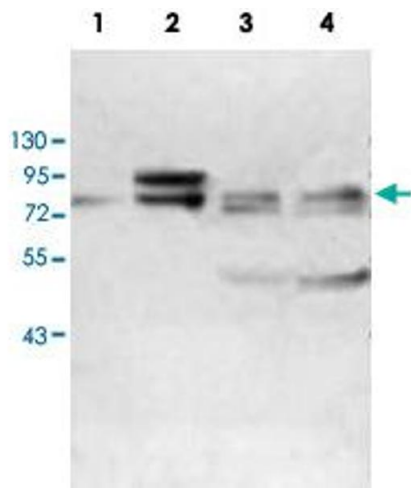
## Images

---



### Immunohistochemistry

**Image 1.** Immunohistochemical analysis of paraffin-embedded human fetal liver showing cytoplasmic staining with ABCF3 polyclonal antibody at a 1 : 100 dilution.



### Western Blotting

**Image 2.** Western blot analysis of human fetal kidney (Lane 1) and MCF-7 cell (Lane 2), K-562 cell (Lane 3) and HeLa cell (Lane 4) lysates with ABCF3 polyclonal antibody at 1 : 500 dilution.