

Datasheet for ABIN5571820

anti-Acetyl-CoA Carboxylase alpha antibody (Ser80)**2** Images[Go to Product page](#)

Overview

Quantity:	100 µg
Target:	Acetyl-CoA Carboxylase alpha (ACACA)
Binding Specificity:	Ser80
Reactivity:	Human, Rat, Mouse
Host:	Rabbit
Clonality:	Polyclonal
Conjugate:	This Acetyl-CoA Carboxylase alpha antibody is un-conjugated
Application:	Western Blotting (WB), Immunohistochemistry (Paraffin-embedded Sections) (IHC (p))

Product Details

Purpose:	Rabbit polyclonal antibody raised against synthetic peptide of ACACA.
Immunogen:	A synthetic peptide corresponding to residues surrounding serine 80 of human ACACA.
Specificity:	This antibody detects endogenous levels of total ACACA Carboxylase protein.
Cross-Reactivity:	Human, Mouse, Rat

Target Details

Target:	Acetyl-CoA Carboxylase alpha (ACACA)
Alternative Name:	ACACA (ACACA Products)
Background:	Full Gene Name: acetyl-Coenzyme A carboxylase alpha Synonyms: ACAC,ACC,ACC1,ACCA

Target Details

Gene ID:	31
Pathways:	AMPK Signaling, Ribonucleoside Biosynthetic Process, Warburg Effect

Application Details

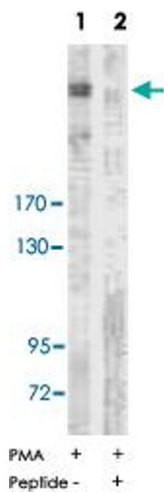
Application Notes:	Western Blot (1:500-1:1000) Immunohistochemistry (1:50-1:100) ELISA (1:5000) The optimal working dilution should be determined by the end user.
--------------------	--

Restrictions:	For Research Use only
---------------	-----------------------

Handling

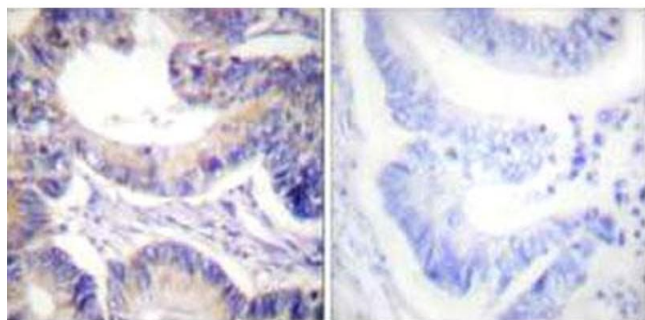
Format:	Liquid
Buffer:	In PBS, pH 7.4 (150 mM NaCl, 0.02 % sodium azide, 50 % glycerol)
Preservative:	Sodium azide
Precaution of Use:	This product contains Sodium azide: a POISONOUS AND HAZARDOUS SUBSTANCE which should be handled by trained staff only.
Storage:	-20 °C
Storage Comment:	Store at -20°C. Aliquot to avoid repeated freezing and thawing.

Images



Western Blotting

Image 1. Western blot analysis of extracts from NIH/3T3 cells treated with PMA (125 ng/ml, 15 min), using ACACA polyclonal antibody . Peptide



Peptide

-

+

Immunohistochemistry

Image 2. Immunohistochemical analysis of paraffin-embedded human colon carcinoma tissue using ACACA polyclonal antibody . Peptide