



[Go to Product page](#)

Datasheet for ABIN5571829

## anti-Aggrecan antibody (C-Term)

### 1 Image

#### Overview

Quantity:	50 µg
Target:	Aggrecan (ACAN)
Binding Specificity:	C-Term
Reactivity:	Human, Rat, Hamster, Monkey, Gorilla
Host:	Rabbit
Clonality:	Polyclonal
Conjugate:	This Aggrecan antibody is un-conjugated
Application:	Immunohistochemistry (Paraffin-embedded Sections) (IHC (p))

#### Product Details

Purpose:	Rabbit polyclonal antibody raised against synthetic peptide of ACAN.
Immunogen:	A synthetic peptide corresponding to 16 amino acid at C-terminus of human ACAN.
Specificity:	BLAST analysis of the peptide immunogen showed no homology with other human proteins, except REG1A (50 %).
Cross-Reactivity:	Gorilla, Hamster, Human, Monkey, Rat
Cross-Reactivity (Details):	BLAST analysis of the peptide immunogen showed no homology with other human proteins, except REG1A (50 %).

#### Target Details

Target:	Aggrecan (ACAN)
---------	-----------------

## Target Details

---

Alternative Name: [ACAN \(ACAN Products\)](#)

Background: Full Gene Name: aggrecan  
Synonyms: AGC1,AGCAN,CSPG1,CSPGCP,MSK16,SEDK

Gene ID: 176

Pathways: [Glycosaminoglycan Metabolic Process](#), [Dicarboxylic Acid Transport](#)

## Application Details

---

Application Notes: Immunohistochemistry (Formalin/PFA-fixed paraffin-embedded sections) (10 µg/mL)  
The optimal working dilution should be determined by the end user.

Restrictions: For Research Use only

## Handling

---

Format: Liquid

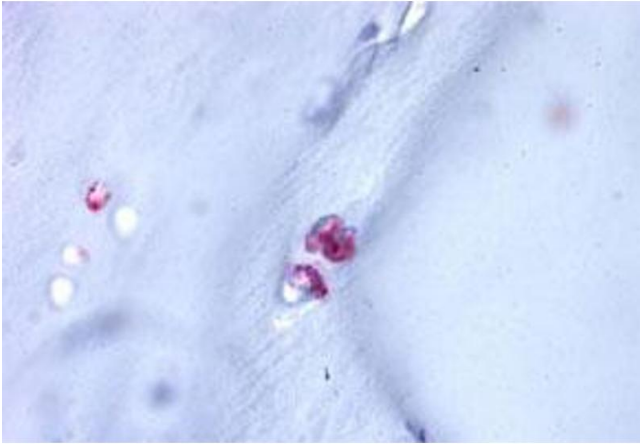
Buffer: In PBS (0.09 % sodium azide)

Preservative: Sodium azide

Precaution of Use: This product contains Sodium azide: a POISONOUS AND HAZARDOUS SUBSTANCE which should be handled by trained staff only.

Storage: 4 °C,-20 °C

Storage Comment: Store at 4°C. For long term storage store at -20°C.  
Aliquot to avoid repeated freezing and thawing.



### Immunohistochemistry

**Image 1.** Immunohistochemistry (Formalin/PFA-fixed paraffin-embedded sections) of human cartilage tissue with ACAN polyclonal antibody . Immunohistochemistry of formalin-fixed, paraffin-embedded tissue after heat-induced antigen retrieval.