



Datasheet for ABIN5571854

anti-Acetylated Lysine antibody (acetylated)



[Go to Product page](#)

3 Images

Overview

Quantity:	100 µg
Target:	Acetylated Lysine
Binding Specificity:	acetylated
Reactivity:	Please inquire
Host:	Rabbit
Clonality:	Monoclonal
Conjugate:	This Acetylated Lysine antibody is un-conjugated
Application:	Western Blotting (WB), ELISA, Immunohistochemistry (IHC), Immunoprecipitation (IP), Immunocytochemistry (ICC), Flow Cytometry (FACS)

Product Details

Purpose:	Recombinant rabbit monoclonal antibody raised against acetylated-lysine.
Immunogen:	Original antibody is raised against acetyllysine conjugated with BSA.
Clone:	RM101
Isotype:	IgG
Specificity:	This antibody reacts to lysine-acetylated proteins. No cross reactivity with nonacetylated lysine, and lysine with other modification.

Target Details

Target:	Acetylated Lysine
---------	-------------------

Target Details

Abstract: [Acetylated Lysine Products](#)

Target Type: Chemical

Application Details

Application Notes: ELISA
Flow Cytometry
Immunocytochemistry (1:100-1:500)
Immunohistochemistry (1:100-1:500)
Immunoprecipitation (1:100-1:500)
Western Blot (1:500-1:2000)
The optimal working dilution should be determined by the end user.

Restrictions: For Research Use only

Handling

Format: Liquid

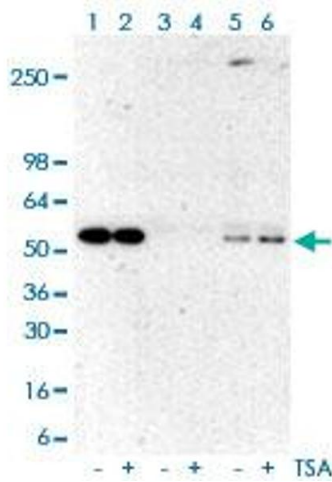
Buffer: In PBS (50 % glycerol, 1 % BSA, 0.09 % sodium azide)

Preservative: Sodium azide

Precaution of Use: This product contains Sodium azide: a POISONOUS AND HAZARDOUS SUBSTANCE which should be handled by trained staff only.

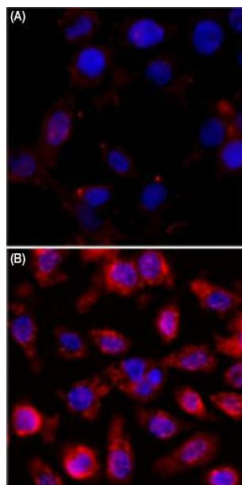
Storage: -20 °C

Storage Comment: Store at -20°C.
Aliquot to avoid repeated freezing and thawing.



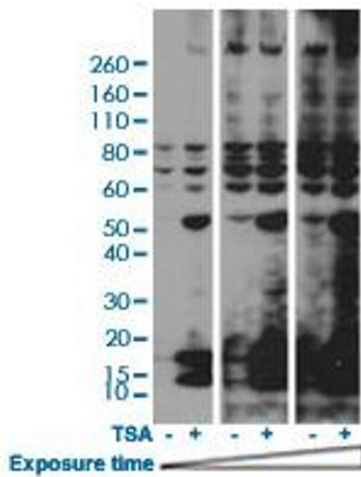
Immunoprecipitation

Image 1. Immunoprecipitation analysis of Lane 1: A431 cell whole lysates, Lane 2: TSA-treated A431 cell whole lysates; Lane 3: A431 cell whole lysates, Lane 4: TSA-treated A431 cell whole lysates using rabbit IgG antibody; Lane 5: A431 cell whole lysates, Lane 6: TSA-treated A431 cell whole lysates using Acetylated-Lysine monoclonal antibody, clone RM101 at 1:500 dilution.



Immunocytochemistry

Image 2. Immunocytochemistry staining of A431 cells (A) and A431 cells treated with Trichostatin A (TSA) (B) using Acetylated-Lysine monoclonal antibody, clone RM101 (Red) at 1:500 dilution. Nuclear DNA was stained with DAPI (Blue).



Western Blotting

Image 3. Western blot analysis of HeLa cells nontreated or treated with 400 nM Trichostatin A (TSA) using Acetylated-Lysine monoclonal antibody, clone RM101 at 1:2000 dilution.