

Datasheet for ABIN5571940
anti-ACTC1 antibody (N-Term)[Go to Product page](#)

2 Images

Overview

Quantity:	100 µL
Target:	ACTC1
Binding Specificity:	N-Term
Reactivity:	Human, Mouse
Host:	Rabbit
Clonality:	Monoclonal
Conjugate:	This ACTC1 antibody is un-conjugated
Application:	Western Blotting (WB), Immunohistochemistry (Paraffin-embedded Sections) (IHC (p))

Product Details

Purpose:	Recombinant rabbit monoclonal antibody raised against of human ACTC1.
Immunogen:	Original antibody is raised against a synthetic peptide corresponding to N-terminus of human ACTC1.
Clone:	RM257
Isotype:	IgG
Cross-Reactivity:	Human, Mouse

Target Details

Target:	ACTC1
Alternative Name:	ACTC1 (ACTC1 Products)

Target Details

Background: Full Gene Name: actin, alpha, cardiac muscle 1
Synonyms: ACTC,CMD1R,CMH11

Gene ID: 70

Pathways: [Myometrial Relaxation and Contraction](#)

Application Details

Application Notes: Immunohistochemistry (Formalin/PFA-fixed paraffin-embedded sections) (1:1000-1:2500)
Western Blot (1:1000-1:2000)
The optimal working dilution should be determined by the end user.

Restrictions: For Research Use only

Handling

Format: Liquid

Buffer: In PBS (50 % glycerol, 1 % BSA, 0.09 % sodium azide)

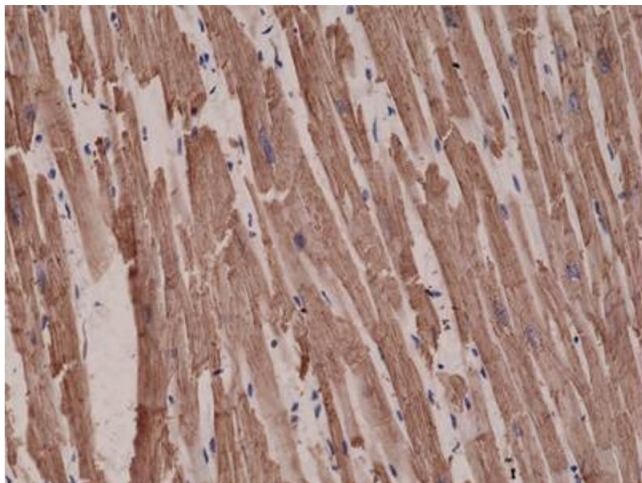
Preservative: Sodium azide

Precaution of Use: This product contains Sodium azide: a POISONOUS AND HAZARDOUS SUBSTANCE which should be handled by trained staff only.

Storage: -20 °C

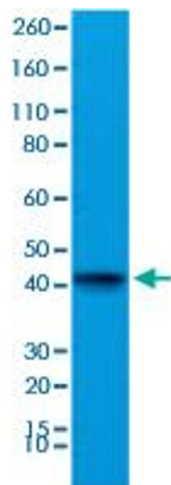
Storage Comment: Store at -20°C.
Aliquot to avoid repeated freezing and thawing.

Images



Immunohistochemistry

Image 1. Immunohistochemical staining (Formalin-fixed paraffin-embedded sections) of human heart with ACTC1 monoclonal antibody, clone RM257 at a 1:1000 dilution.



Western Blotting

Image 2. Western blot analysis of mouse heart tissue lysates with ACTC1 monoclonal antibody, clone RM257 at a 1:1000 dilution.