

Datasheet for ABIN5571941

anti-Actin, gamma 1 antibody (N-Term)**2** Images[Go to Product page](#)

Overview

Quantity:	50 µg
Target:	Actin, gamma 1 (ACTG1)
Binding Specificity:	N-Term
Reactivity:	Human
Host:	Mouse
Clonality:	Monoclonal
Conjugate:	This Actin, gamma 1 antibody is un-conjugated
Application:	Western Blotting (WB), ELISA, Immunocytochemistry (ICC), Flow Cytometry (FACS), Immunohistochemistry (Paraffin-embedded Sections) (IHC (p)), Immunohistochemistry (Frozen Sections) (IHC (fro))

Product Details

Purpose:	Mouse monoclonal antibody raised against synthetic peptide of human ACTG1.
Immunogen:	A synthetic peptide (conjugated with KLH) corresponding to acetylated N-terminus region of human ACTG1.
Sequence:	Ac-EEEIAALVI-COOH
Clone:	2A3
Isotype:	IgG2b
Cross-Reactivity:	Human

Target Details

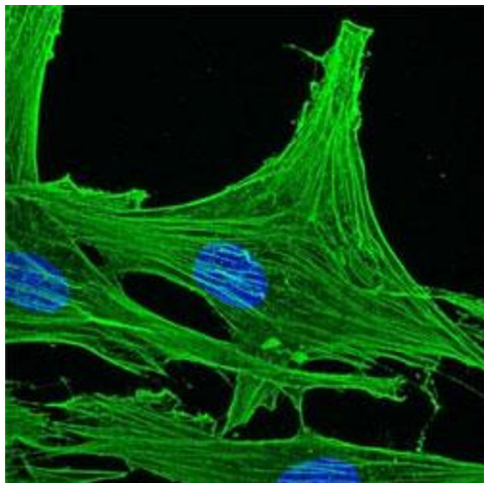
Target:	Actin, gamma 1 (ACTG1)
Alternative Name:	ACTG1 (ACTG1 Products)
Background:	Full Gene Name: actin, gamma 1 Synonyms: ACT,ACTG,DFNA20,DFNA26
Gene ID:	71
Pathways:	Myometrial Relaxation and Contraction , Cell-Cell Junction Organization

Application Details

Application Notes:	ELISA Flow Cytometry Immunocytochemistry Immunohistochemistry (Frozen sections) (1:100-1:500) Immunohistochemistry (Formalin/PFA-fixed paraffin-embedded sections) (5 µg/mL) Western Blot (1:1000-1:5000) The optimal working dilution should
Restrictions:	For Research Use only

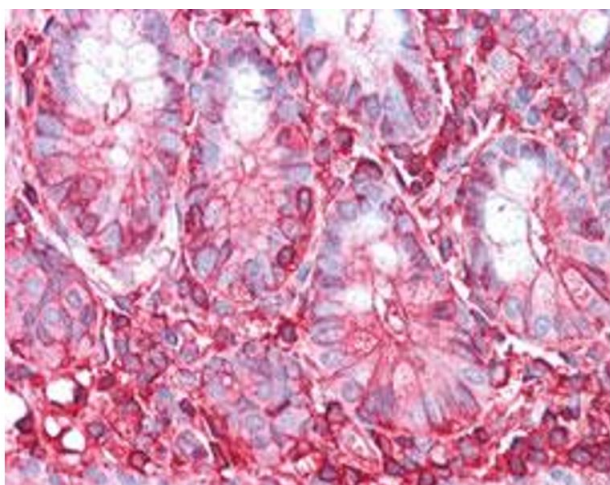
Handling

Format:	Liquid
Buffer:	In PBS (0.09 % sodium azide).
Preservative:	Sodium azide
Precaution of Use:	This product contains Sodium azide: a POISONOUS AND HAZARDOUS SUBSTANCE which should be handled by trained staff only.
Storage:	4 °C,-20 °C
Storage Comment:	Store at 4°C. For long term storage store at -20°C. Aliquot to avoid repeated freezing and thawing.



Immunocytochemistry

Image 1. Immunocytochemistry staining of methanol fixed human dermal fibroblasts with ACTG1 monoclonal antibody, clone 2A3 at 1:500 dilution.



Immunohistochemistry

Image 2. Immunohistochemical staining (Formalin-fixed paraffin-embedded sections) of human small intestine with ACTG1 monoclonal antibody, clone 2A3 at 5 ug/mL working concentration.