

Datasheet for ABIN5571948

anti-Actin antibody[Go to Product page](#)**1** Image

Overview

Quantity:	100 µg
Target:	Actin
Reactivity:	Human, Rat, Mouse, Chicken
Host:	Mouse
Clonality:	Monoclonal
Conjugate:	This Actin antibody is un-conjugated
Application:	Western Blotting (WB), Immunohistochemistry (Frozen Sections) (IHC (fro))

Product Details

Purpose:	Mouse monoclonal antibody raised against partial synthetic peptide of actin.
Immunogen:	A synthetic peptide corresponding to at the C-terminus of actin. (Multiple Antigen Peptide backbone)
Sequence:	SGPSIVHRKC F
Clone:	AC-40
Isotype:	IgG2a
Cross-Reactivity:	Chicken, Human, Mouse, Rat

Target Details

Target:	Actin
Abstract:	Actin Products

Application Details

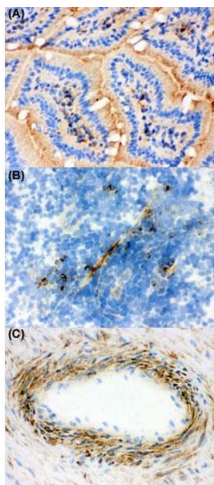
Application Notes:	Immunohistochemistry (4 µg/mL) Western Blot (2 µg/mL) The optimal working dilution should be determined by the end user.
--------------------	--

Restrictions:	For Research Use only
---------------	-----------------------

Handling

Format:	Lyophilized
Buffer:	Lyophilized from ascites fluid (1.2 % sodium acetate, 2 mg BSA, 0.01 mg sodium azide)
Preservative:	Sodium azide
Precaution of Use:	This product contains Sodium azide: a POISONOUS AND HAZARDOUS SUBSTANCE which should be handled by trained staff only.
Storage:	-20 °C
Storage Comment:	Store at -20°C. After reconstitution with 1 mL of 1.2% sodium acetate or neutral PBS and concentration will be 100 ug/mL, store at -20°C. Aliquot to avoid repeated freezing and thawing.

Images



Immunohistochemistry

Image 1. Immunohistochemical staining of mouse intestine tissue (A), rat spleen tissue (B), human placenta tissue (C) with Actin monoclonal antibody, clone AC-40 under 4 ug/mL working concentration.