

Datasheet for ABIN5571954
anti-Actin-Like 6B antibody (AA 178-452)[Go to Product page](#)

1 Image

Overview

Quantity:	100 µg
Target:	Actin-Like 6B (ACTL6B)
Binding Specificity:	AA 178-452
Reactivity:	Human
Host:	Rabbit
Clonality:	Polyclonal
Conjugate:	This Actin-Like 6B antibody is un-conjugated
Application:	Western Blotting (WB), ELISA

Product Details

Purpose:	Rabbit polyclonal antibody raised against partial recombinant ACTL6B.
Immunogen:	Recombinant protein corresponding to amino acids 178-452 of human ACTL6B.
Specificity:	This antibody is specific to ACTL6B.
Cross-Reactivity:	Human

Target Details

Target:	Actin-Like 6B (ACTL6B)
Alternative Name:	ACTL6B (ACTL6B Products)
Background:	Full Gene Name: actin-like 6B Synonyms: ACTL6,BAF53B

Target Details

Gene ID: 51412

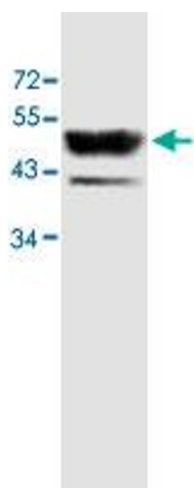
Application Details

Application Notes:	Western Blot (1:1000-1:2000) ELISA (1:10000-1:80000) The optimal working dilution should be determined by the end user.
Restrictions:	For Research Use only

Handling

Format:	Liquid
Buffer:	In buffer containing 0.02 % sodium azide
Preservative:	Sodium azide
Precaution of Use:	This product contains Sodium azide: a POISONOUS AND HAZARDOUS SUBSTANCE which should be handled by trained staff only.
Storage:	4 °C,-20 °C
Storage Comment:	Store at 4°C for three months. For long term storage store at -20°C. Aliquot to avoid repeated freezing and thawing.

Images



Western Blotting

Image 1. Western blot analysis of human fetal skeletal muscle lysate with ACTL6B polyclonal antibody at 1 : 500 dilution.