

Datasheet for ABIN5571980
anti-ADAM10 antibody (C-Term)[Go to Product page](#)

1 Image

Overview

Quantity:	100 µg
Target:	ADAM10
Binding Specificity:	C-Term
Reactivity:	Human, Rat, Mouse
Host:	Rabbit
Clonality:	Polyclonal
Conjugate:	This ADAM10 antibody is un-conjugated
Application:	Western Blotting (WB), ELISA

Product Details

Purpose:	Rabbit polyclonal antibody raised against synthetic peptide of ADAM10.
Immunogen:	A synthetic peptide corresponding to 16 amino acids at C-terminus of human ADAM10.
Cross-Reactivity:	Human, Mouse, Rat

Target Details

Target:	ADAM10
Alternative Name:	ADAM10 (ADAM10 Products)
Background:	Full Gene Name: ADAM metallopeptidase domain 10 Synonyms: AD10,CD156c,HsT18717,MADM,kuz
Gene ID:	102

Target Details

Pathways: [Notch Signaling](#), [EGFR Signaling Pathway](#)

Application Details

Application Notes: ELISA (1:160000)
Western Blot (1:500-1:1000)
The optimal working dilution should be determined by the end user.

Restrictions: For Research Use only

Handling

Format: Liquid

Buffer: In buffer containing 0.02 % sodium azide

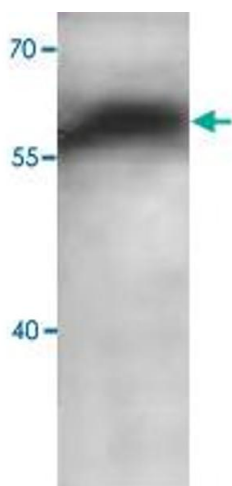
Preservative: Sodium azide

Precaution of Use: This product contains Sodium azide: a POISONOUS AND HAZARDOUS SUBSTANCE which should be handled by trained staff only.

Storage: 4 °C, -20 °C

Storage Comment: Store at 4°C for three months. For long term storage store at -20°C.
Aliquot to avoid repeated freezing and thawing.

Images



Western Blotting

Image 1. Western blot analysis of human fetal brain lysate with ADAM10 polyclonal antibody at 1 : 1000 dilution.