

Datasheet for ABIN5572041

**anti-ADCYAP1R1 antibody (Extracellular Domain)**[Go to Product page](#)**1** Image

## Overview

Quantity:	50 µg
Target:	ADCYAP1R1
Binding Specificity:	Extracellular Domain
Reactivity:	Human, Monkey, Gorilla
Host:	Rabbit
Clonality:	Polyclonal
Conjugate:	This ADCYAP1R1 antibody is un-conjugated
Application:	ELISA, Immunohistochemistry (Paraffin-embedded Sections) (IHC (p))

## Product Details

Purpose:	Rabbit polyclonal antibody raised against synthetic peptide of ADCYAP1R1.
Immunogen:	A synthetic peptide corresponding to 18 amino acids at N-terminal extracellular domain of human ADCYAP1R1.
Specificity:	BLAST analysis of the peptide immunogen showed no homology with other human proteins.
Cross-Reactivity:	Gorilla, Human, Monkey
Cross-Reactivity (Details):	BLAST analysis of the peptide immunogen showed no homology with other human proteins.

## Target Details

Target:	ADCYAP1R1
Alternative Name:	ADCYAP1R1 ( <a href="#">ADCYAP1R1 Products</a> )

## Target Details

Background:	Full Gene Name: adenylate cyclase activating polypeptide 1 (pituitary) receptor type I Synonyms: PAC1,PACAPR,PACAPRI
Gene ID:	117
Pathways:	<a href="#">Neurotrophin Signaling Pathway</a> , <a href="#">cAMP Metabolic Process</a> , <a href="#">Regulation of Carbohydrate Metabolic Process</a>

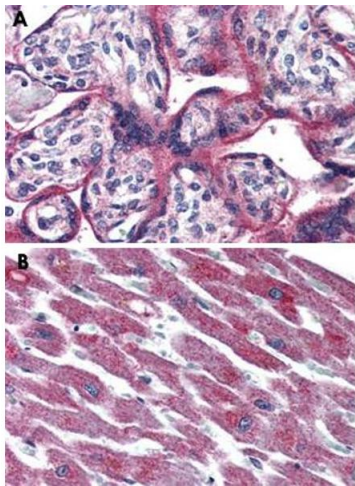
## Application Details

Application Notes:	Immunohistochemistry (Formalin/PFA-fixed paraffin-embedded sections) (5-7 µg/mL) The optimal working dilution should be determined by the end user.
Restrictions:	For Research Use only

## Handling

Format:	Liquid
Buffer:	In PBS (0.09 % sodium azide)
Preservative:	Sodium azide
Precaution of Use:	This product contains Sodium azide: a POISONOUS AND HAZARDOUS SUBSTANCE which should be handled by trained staff only.
Storage:	4 °C,-80 °C
Storage Comment:	Store at 4°C. For long term storage store at -80°C. Aliquot to avoid repeated freezing and thawing.

## Images



### Immunohistochemistry

**Image 1.** Immunohistochemical staining of formalin-fixed, paraffin-embedded human placenta (A) and human heart (B) tissue after heat-induced antigen retrieval. Using ADCYAP1R1 polyclonal antibody .