



[Go to Product page](#)

Datasheet for ABIN5572118
anti-ADRA1B antibody

1 Image

Overview

Quantity:	50 µg
Target:	ADRA1B
Reactivity:	Human, Mouse, Rat, Dog, Pig, Cow, Hamster, Monkey, Horse, Gorilla
Host:	Rabbit
Clonality:	Polyclonal
Conjugate:	This ADRA1B antibody is un-conjugated
Application:	Immunohistochemistry (Paraffin-embedded Sections) (IHC (p))

Product Details

Purpose:	Rabbit polyclonal antibody raised against synthetic peptide of ADRA1B.
Immunogen:	A synthetic peptide (conjugated with KLH) corresponding to human ADRA1B.
Specificity:	3rd Cytoplasmic domain of human.
Cross-Reactivity:	Cow, Dog, Gorilla, Hamster, Horse, Human, Monkey, Mouse, Pig, Rat

Target Details

Target:	ADRA1B
Alternative Name:	ADRA1B (ADRA1B Products)
Background:	Full Gene Name: adrenergic, alpha-1B-, receptor Synonyms: ADRA1,ALPHA1BAR
Gene ID:	147

Target Details

Pathways: [AMPK Signaling](#), [Carbohydrate Homeostasis](#), [Regulation of Carbohydrate Metabolic Process](#)

Application Details

Application Notes: Immunohistochemistry (Formalin/PFA-fixed paraffin-embedded sections) (10 µg/mL) ELISA
The optimal working dilution should be determined by the end user.

Restrictions: For Research Use only

Handling

Format: Liquid

Buffer: In PBS (0.09 % sodium azide)

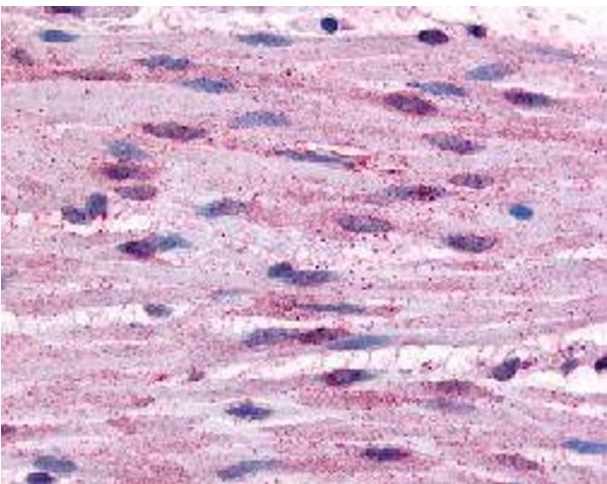
Preservative: Sodium azide

Precaution of Use: This product contains Sodium azide: a POISONOUS AND HAZARDOUS SUBSTANCE which should be handled by trained staff only.

Storage: 4 °C,-80 °C

Storage Comment: Store at 4°C. For long term storage store at -80°C.
Aliquot to avoid repeated freezing and thawing.

Images



Immunohistochemistry

Image 1. Immunohistochemical (Formalin/PFA-fixed paraffin-embedded sections) staining in human smooth muscle cells with ADRA1B polyclonal antibody .