

Datasheet for ABIN5572143  
**anti-ADRB3 antibody (C-Term)**[Go to Product page](#)

## 1 Image

## Overview

Quantity:	50 µg
Target:	ADRB3
Binding Specificity:	C-Term
Reactivity:	Human
Host:	Rabbit
Clonality:	Polyclonal
Conjugate:	This ADRB3 antibody is un-conjugated
Application:	Immunohistochemistry (Paraffin-embedded Sections) (IHC (p))

## Product Details

Purpose:	Rabbit polyclonal antibody raised against synthetic peptide of ADRB3.
Immunogen:	A synthetic peptide corresponding to 18 amino acids at C-terminus of human ADRB3.
Specificity:	BLAST analysis of the peptide immunogen showed no homology with other human proteins, except OR2G3 (44 %).
Cross-Reactivity:	Human
Cross-Reactivity (Details):	BLAST analysis of the peptide immunogen showed no homology with other human proteins, except OR2G3 (44 %).

## Target Details

Target:	ADRB3
---------	-------

## Target Details

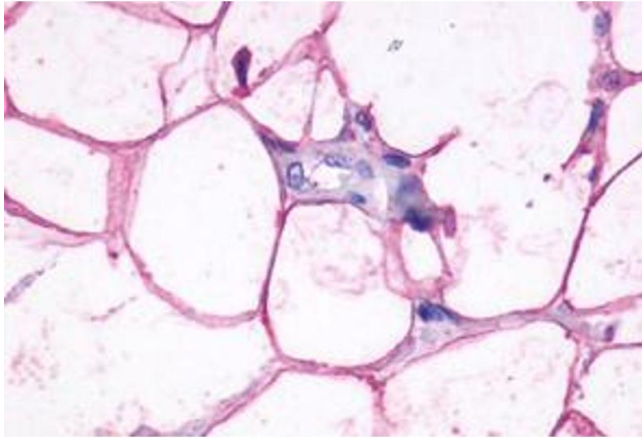
Alternative Name:	ADRB3 ( <a href="#">ADRB3 Products</a> )
Background:	Full Gene Name: adrenergic, beta-3-, receptor Synonyms: BETA3AR
Gene ID:	155
Pathways:	<a href="#">cAMP Metabolic Process</a> , <a href="#">Regulation of G-Protein Coupled Receptor Protein Signaling</a> , <a href="#">Feeding Behaviour</a> , <a href="#">Brown Fat Cell Differentiation</a>

## Application Details

Application Notes:	Immunohistochemistry (Formalin/PFA-fixed paraffin-embedded sections) (36 µg/mL) The optimal working dilution should be determined by the end user.
Restrictions:	For Research Use only

## Handling

Format:	Liquid
Buffer:	In PBS (0.09 % sodium azide)
Preservative:	Sodium azide
Precaution of Use:	This product contains Sodium azide: a POISONOUS AND HAZARDOUS SUBSTANCE which should be handled by trained staff only.
Storage:	4 °C,-80 °C
Storage Comment:	Store at 4°C. For long term storage store at -80°C. Aliquot to avoid repeated freezing and thawing.



#### Immunohistochemistry

**Image 1.** Immunohistochemical staining of formalin-fixed, paraffin-embedded human adipose tissue after heat-induced antigen retrieval. Using ADRB3 polyclonal antibody