

Datasheet for ABIN5572177

anti-Aftiphilin antibody**2** Images[Go to Product page](#)

Overview

Quantity:	100 µL
Target:	Aftiphilin (AFTPH)
Reactivity:	Human
Host:	Rabbit
Clonality:	Polyclonal
Conjugate:	This Aftiphilin antibody is un-conjugated
Application:	Immunohistochemistry (Paraffin-embedded Sections) (IHC (p)), Immunofluorescence (IF)

Product Details

Purpose:	Rabbit polyclonal antibody raised against recombinant AFTPH.
Immunogen:	Recombinant protein corresponding to amino acids of human AFTPH.
Sequence:	RENNKINRVN ELNSVKEVAL GRSLDNKGDT DGEDQVCVSE ISIVTNRGFS VEKQGLPTLQ QDEFLQSGVQ SK
Isotype:	IgG
Cross-Reactivity:	Human

Target Details

Target:	Aftiphilin (AFTPH)
Alternative Name:	AFTPH (AFTPH Products)
Background:	Full Gene Name: aftiphilin

Target Details

Synonyms: FLJ20080,FLJ23793,MGC33965,Nbla10388

Gene ID: 54812

Application Details

Application Notes: Immunohistochemistry (1:500-1:1000)
Immunofluorescence (1-4 µg/mL)
The optimal working dilution should be determined by the end user.

Restrictions: For Research Use only

Handling

Format: Liquid

Buffer: In PBS, pH 7.2 (40 % glycerol, 0.02 % sodium azide)

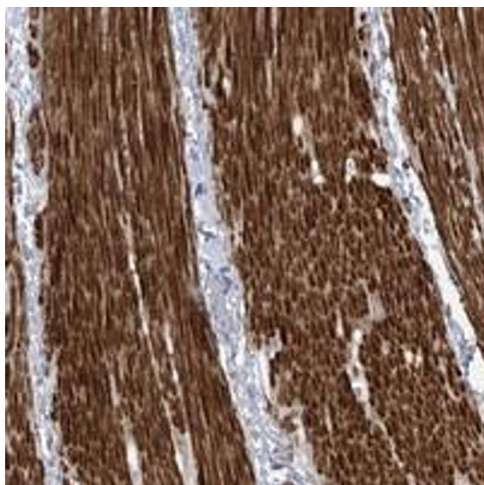
Preservative: Sodium azide

Precaution of Use: This product contains Sodium azide: a POISONOUS AND HAZARDOUS SUBSTANCE which should be handled by trained staff only.

Storage: 4 °C,-20 °C

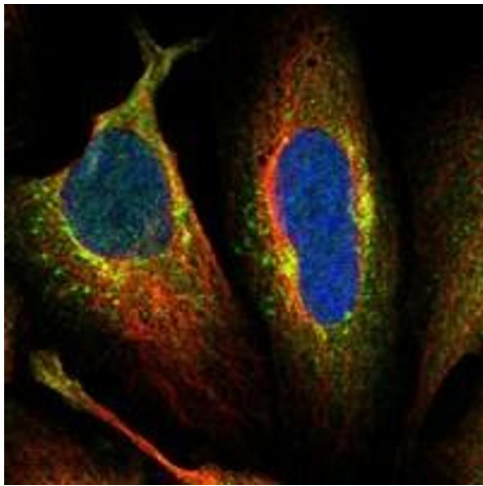
Storage Comment: Store at 4°C. For long term storage store at -20°C.
Aliquot to avoid repeated freezing and thawing.

Images



Immunohistochemistry

Image 1. Immunohistochemical staining of human smooth muscle with AFTPH polyclonal antibody shows strong cytoplasmic positivity in smooth muscle cells.



Immunofluorescence

Image 2. Immunofluorescent staining of human cell line U-2 OS with AFTPH polyclonal antibody at 1-4 ug/mL dilution shows positivity in cytoplasm, golgi apparatus and vesicles.