

Datasheet for ABIN5572391
anti-ALDH4A1 antibody (N-Term)

2 Images

[Go to Product page](#)

Overview

Quantity:	100 µL
Target:	ALDH4A1
Binding Specificity:	N-Term
Reactivity:	Human
Host:	Rabbit
Clonality:	Polyclonal
Conjugate:	This ALDH4A1 antibody is un-conjugated
Application:	Western Blotting (WB), Immunohistochemistry (Paraffin-embedded Sections) (IHC (p))

Product Details

Purpose:	Rabbit polyclonal antibody raised against synthetic peptide of human ALDH4A1.
Immunogen:	A synthetic peptide corresponding to N-terminus of human ALDH4A1.
Sequence:	QGKTVIQAEI DAAAEIDFF RFNAKYAVEL EGQPISVPP STNSTVYRGL
Cross-Reactivity:	Human

Target Details

Target:	ALDH4A1
Alternative Name:	ALDH4A1 (ALDH4A1 Products)
Background:	Full Gene Name: aldehyde dehydrogenase 4 family, member A1 Synonyms: ALDH4,P5CD,P5CDh,P5CDhL,P5CDhS

Target Details

Gene ID:	8659
NCBI Accession:	NM_001161504
Pathways:	Monocarboxylic Acid Catabolic Process

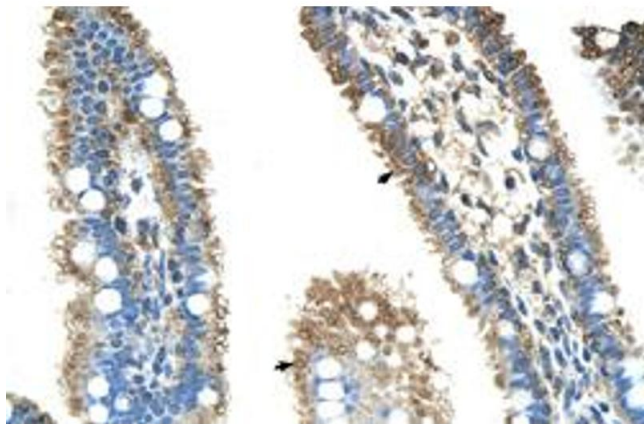
Application Details

Application Notes:	Immunohistochemistry (Formalin/PFA-fixed paraffin-embedded sections) (4-8 µg/mL) Western Blot (2.5 µg/mL) The optimal working dilution should be determined by the end user.
Restrictions:	For Research Use only

Handling

Format:	Liquid
Buffer:	In PBS (2 % sucrose, 0.09 % sodium azide).
Preservative:	Sodium azide
Precaution of Use:	This product contains Sodium azide: a POISONOUS AND HAZARDOUS SUBSTANCE which should be handled by trained staff only.
Storage:	4 °C, -20 °C
Storage Comment:	Store at 4°C. For long term storage store at -20°C. Aliquot to avoid repeated freezing and thawing.

Images



Immunohistochemistry

Image 1. Immunohistochemical staining (Formalin-fixed paraffin-embedded sections) of human intestine with ALDH4A1 polyclonal antibody at 4-8 µg/mL working concentration.



Western Blotting

Image 2. Western Blot analysis of HepG2 cell lysate with ALDH4A1 polyclonal antibody at 2.5 ug/mL working concentration.