



Datasheet for ABIN5572472  
**anti-AMOTL1 antibody**



[Go to Product page](#)

2 Images

Overview

Quantity:	100 µL
Target:	AMOTL1
Reactivity:	Human
Host:	Rabbit
Clonality:	Polyclonal
Conjugate:	This AMOTL1 antibody is un-conjugated
Application:	Immunofluorescence (IF), Immunohistochemistry (Paraffin-embedded Sections) (IHC (p))

Product Details

Purpose:	Rabbit polyclonal antibody raised against recombinant AMOTL1.
Immunogen:	Recombinant protein corresponding to human AMOTL1.
Sequence:	SPSACYSPSS PVQVLEDSTY FSPDFQLYSG RHETSALTVE ATSSIREKWV EDPLCNFHSP NFLRISEVEM RGSDDAAAGT VLQRLIQEQL RYGTPTENMN LLAIQHQTG SAGPAHPTNN FSSTENLTQE DPQM VYQSAR QEPQGQEHQV
Isotype:	IgG
Cross-Reactivity:	Human

Target Details

Target:	AMOTL1
Alternative Name:	AMOTL1 ( <a href="#">AMOTL1 Products</a> )

## Target Details

Background: Full Gene Name: angiotenin like 1  
Synonyms: JEAP

Gene ID: 154810

## Application Details

Application Notes: Immunohistochemistry (Formalin/PFA-fixed paraffin-embedded sections) (1:50-1:200)  
Immunofluorescence (1-4 µg/mL)  
The optimal working dilution should be determined by the end user.

Restrictions: For Research Use only

## Handling

Format: Liquid

Buffer: In PBS, pH 7.2 (40 % glycerol, 0.02 % sodium azide)

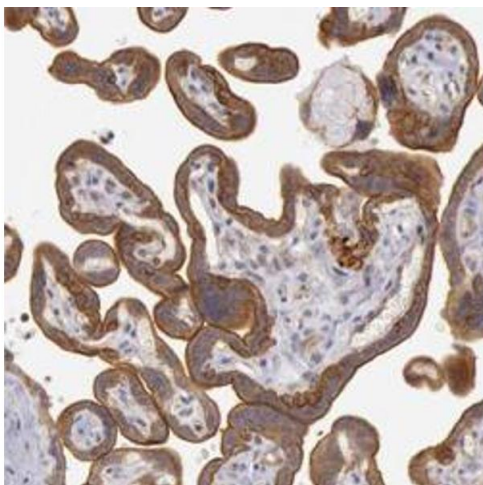
Preservative: Sodium azide

Precaution of Use: This product contains Sodium azide: a POISONOUS AND HAZARDOUS SUBSTANCE which should be handled by trained staff only.

Storage: 4 °C, -20 °C

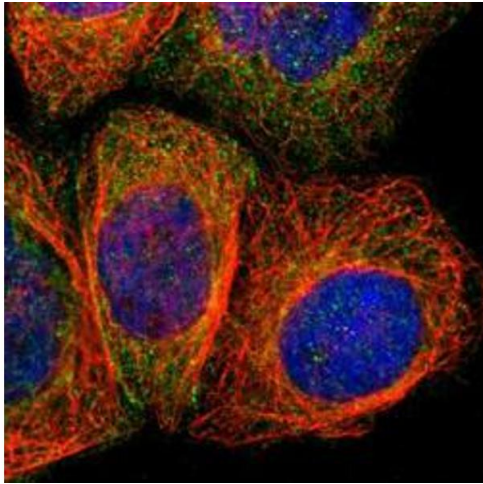
Storage Comment: Store at 4 °C. For long term storage store at -20°C.  
Aliquot to avoid repeated freezing and thawing.

## Images



### Immunohistochemistry

**Image 1.** Immunohistochemistry (Formalin/PFA-fixed paraffin-embedded sections) of human placenta with AMOTL1 polyclonal antibody shows strong cytoplasmic and membranous positivity in trophoblastic cells.



### Immunofluorescence

**Image 2.** Immunofluorescence of A-431 cell line with AMOTL1 polyclonal antibody shows positivity in cytoplasm and cell junctions. Fixation/Permeabilization: PFA/Triton X-100