

Datasheet for ABIN5572940

anti-ARF1 antibody

3 Images

[Go to Product page](#)

Overview

Quantity:	100 µL
Target:	ARF1
Reactivity:	Human
Host:	Mouse
Clonality:	Monoclonal
Conjugate:	This ARF1 antibody is un-conjugated
Application:	Western Blotting (WB), ELISA, Immunofluorescence (IF), Immunocytochemistry (ICC), Flow Cytometry (FACS)

Product Details

Purpose:	Mouse monoclonal antibody raised against full length recombinant ARF1.
Immunogen:	Recombinant protein corresponding to full length human ARF1.
Clone:	AT1B3
Isotype:	IgG1
Cross-Reactivity:	Human

Target Details

Target:	ARF1
Alternative Name:	ARF1 (ARF1 Products)
Background:	Full Gene Name: ADP-ribosylation factor 1

Target Details

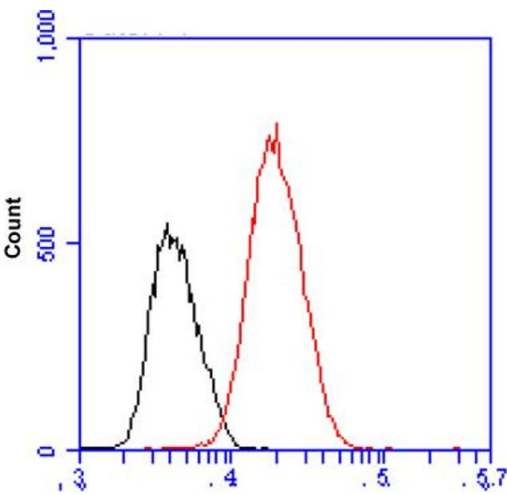
Gene ID:	375
Pathways:	Transition Metal Ion Homeostasis , Inositol Metabolic Process

Application Details

Application Notes:	ELISA Flow Cytometry (2.5 µg for 10 ⁶ cells) Immunocytochemistry (1:100) Immunofluorescence (1:100) Western Blot (1:1000) The optimal working dilution should be determined by the end user.
Restrictions:	For Research Use only

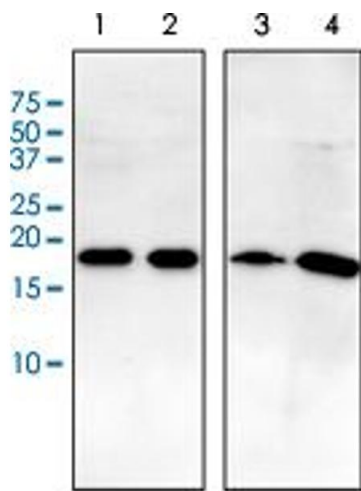
Handling

Format:	Liquid
Concentration:	1 mg/mL
Buffer:	In PBS, pH 7.4 (10 % glycerol, 0.02 % sodium azide).
Preservative:	Sodium azide
Precaution of Use:	This product contains Sodium azide: a POISONOUS AND HAZARDOUS SUBSTANCE which should be handled by trained staff only.
Storage:	-20 °C,-80 °C
Storage Comment:	Store at 2°C to 8°C for 1 week. For long term storage, aliquot and store at -20°C to -80°C. Aliquot to avoid repeated freezing and thawing.



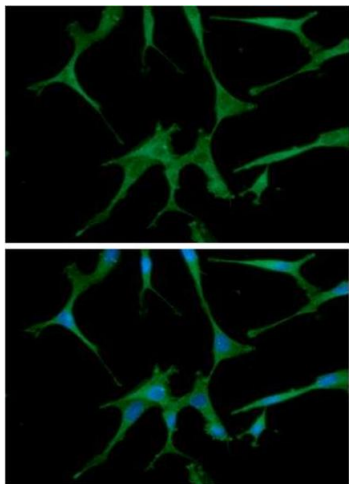
Flow Cytometry

Image 1. Flow cytometric analysis of ARF1 in MCF-7 cell line, staining at 2-5 ug for 1×10^6 cells (Red line). The secondary antibody used goat anti-mouse IgG Alexa fluor 488 conjugate. Isotype control antibody was mouse IgG (Black line).



Western Blotting

Image 2. Western Blot analysis of (1) HeLa cell lysate, (2) HepG2 cell lysate, (3) brain tissue lysate and (4) MCF cell lysate.



Immunofluorescence

Image 3. Immunofluorescent staining of U87 MG cell line stained with DAPI (Blue) for nucleus staining and ARF1 monoclonal antibody, clone AT1B3 with goat anti-mouse IgG-Alexa fluor 488 conjugate (Green).