



Datasheet for ABIN5573020
anti-ARRDC4 antibody



[Go to Product page](#)

1 Image

Overview

Quantity:	100 µg
Target:	ARRDC4
Reactivity:	Human, Mouse, Rat
Host:	Rabbit
Clonality:	Polyclonal
Conjugate:	This ARRDC4 antibody is un-conjugated
Application:	Western Blotting (WB), ELISA

Product Details

Purpose:	Rabbit polyclonal antibody raised against synthetic peptide of ARRDC4.
Immunogen:	A synthetic peptide corresponding to internal of human ARRDC4.
Specificity:	This antibody detects endogenous levels of total ARRDC4 protein.
Cross-Reactivity:	Human, Mouse, Rat

Target Details

Target:	ARRDC4
Alternative Name:	ARRDC4 (ARRDC4 Products)
Background:	Full Gene Name: arrestin domain containing 4 Synonyms: FLJ36045
Gene ID:	91947

Application Details

Application Notes: Western Blot (1:500-1:1000)
ELISA (1:10000)
The optimal working dilution should be determined by the end user.

Restrictions: For Research Use only

Handling

Format: Liquid

Buffer: In PBS, pH 7.4 (150 mM NaCl, 0.02 % sodium azide, 50 % glycerol)

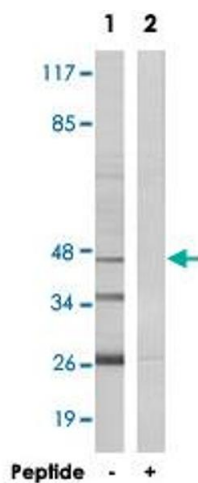
Preservative: Sodium azide

Precaution of Use: This product contains Sodium azide: a POISONOUS AND HAZARDOUS SUBSTANCE which should be handled by trained staff only.

Storage: -20 °C

Storage Comment: Store at -20°C.
Aliquot to avoid repeated freezing and thawing.

Images



Western Blotting

Image 1. Western blot analysis of extracts from COLO 205 cells, using ARRDC4 polyclonal antibody . Peptide