

Datasheet for ABIN5573057

anti-ASRGL1 antibody[Go to Product page](#)**1** Image

Overview

Quantity:	100 µg
Target:	ASRGL1
Reactivity:	Human
Host:	Mouse
Clonality:	Monoclonal
Conjugate:	This ASRGL1 antibody is un-conjugated
Application:	Western Blotting (WB), Immunofluorescence (IF), Flow Cytometry (FACS), Immunohistochemistry (Paraffin-embedded Sections) (IHC (p))

Product Details

Purpose:	Mouse monoclonal antibody raised against full length recombinant human ASRGL1.
Immunogen:	Recombinant protein corresponding to full length human ASRGL1.
Clone:	CRASH-1289
Isotype:	IgG1
Cross-Reactivity:	Human

Target Details

Target:	ASRGL1
Alternative Name:	ASRGL1 (ASRGL1 Products)
Background:	Full Gene Name: asparaginase like 1

Target Details

Synonyms: ALP,ALP1,FLJ22316

Gene ID: 80150

Application Details

Application Notes: Flow Cytometry (0.5-1 µg/10⁶ cells)
Immunofluorescence (0.5-1 µg/mL)
Immunohistochemistry (Formalin/PFA-fixed paraffin-embedded sections) (0.5-1 µg/mL)
Western Blotting (0.5-1 µg/mL)
The optimal working dilution should be determined

Restrictions: For Research Use only

Handling

Format: Liquid

Buffer: In 10 mM PBS (0.05 % BSA, 0.05 % sodium azide).

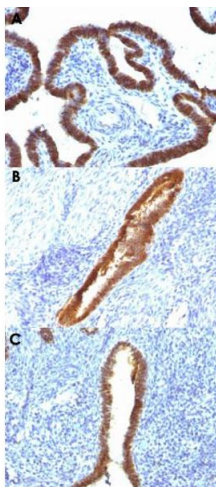
Preservative: Sodium azide

Precaution of Use: This product contains Sodium azide: a POISONOUS AND HAZARDOUS SUBSTANCE which should be handled by trained staff only.

Storage: 4 °C

Storage Comment: Store at 4°C.

Images



Immunohistochemistry

Image 1. Immunohistochemical staining (Formalin-fixed paraffin-embedded sections) of human fallopian tube (A), human endometrium (B) and human uterus (C) with ASRGL1 monoclonal antibody, clone CRASH/1289 .