

Datasheet for ABIN5573061  
**anti-ASS1 antibody (N-Term)**

## 2 Images

[Go to Product page](#)

## Overview

Quantity:	100 µL
Target:	ASS1
Binding Specificity:	N-Term
Reactivity:	Human
Host:	Rabbit
Clonality:	Polyclonal
Conjugate:	This ASS1 antibody is un-conjugated
Application:	Western Blotting (WB), Immunohistochemistry (Paraffin-embedded Sections) (IHC (p))

## Product Details

Purpose:	Rabbit polyclonal antibody raised against synthetic peptide of human ASS1.
Immunogen:	A synthetic peptide corresponding to N-terminus of human ASS1.
Sequence:	YSGGLDTSCI LVWLKEQGYD VIAYLANIGQ KEDFEEARKK ALKLGAKKVF
Cross-Reactivity:	Human

## Target Details

Target:	ASS1
Alternative Name:	ASS1 ( <a href="#">ASS1 Products</a> )
Background:	Full Gene Name: argininosuccinate synthetase 1 Synonyms: ASS,CTLN1

## Target Details

Gene ID:	445
NCBI Accession:	<a href="#">NM_054012</a>
Pathways:	<a href="#">Response to Growth Hormone Stimulus</a> , <a href="#">Cellular Response to Molecule of Bacterial Origin</a>

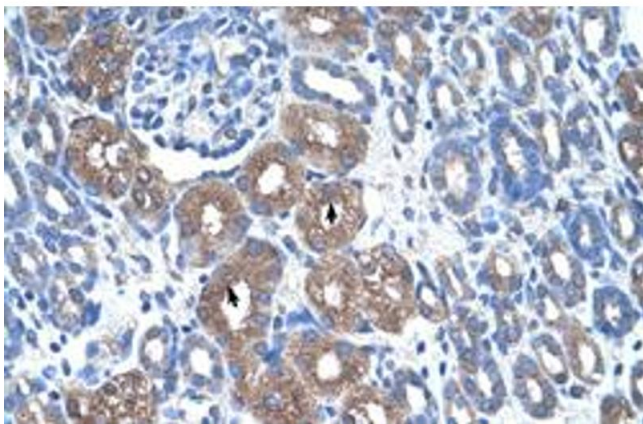
## Application Details

Application Notes:	Immunohistochemistry (Formalin/PFA-fixed paraffin-embedded sections) (4-8 µg/mL) Western Blot (2.5 µg/mL) The optimal working dilution should be determined by the end user.
Restrictions:	For Research Use only

## Handling

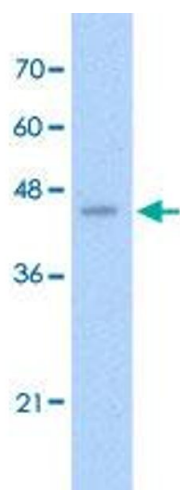
Format:	Liquid
Buffer:	In PBS (2 % sucrose, 0.09 % sodium azide).
Preservative:	Sodium azide
Precaution of Use:	This product contains Sodium azide: a POISONOUS AND HAZARDOUS SUBSTANCE which should be handled by trained staff only.
Storage:	4 °C, -20 °C
Storage Comment:	Store at 4°C. For long term storage store at -20°C. Aliquot to avoid repeated freezing and thawing.

## Images



### Immunohistochemistry

**Image 1.** Immunohistochemical staining (Formalin-fixed paraffin-embedded sections) of human kidney with ASS1 polyclonal antibody at 4-8 ug/mL working concentration.



**Western Blotting**

**Image 2.** Western Blot analysis of HepG2 cell lysate with ASS1 polyclonal antibody at 2.5 ug/mL working concentration.