



Datasheet for ABIN5573068  
**anti-ATAD2B antibody**



[Go to Product page](#)

2 Images

Overview

Quantity:	100 µL
Target:	ATAD2B
Reactivity:	Human
Host:	Rabbit
Clonality:	Polyclonal
Conjugate:	This ATAD2B antibody is un-conjugated
Application:	Western Blotting (WB), Immunohistochemistry (Paraffin-embedded Sections) (IHC (p))

Product Details

Purpose:	Rabbit polyclonal antibody raised against recombinant ATAD2B.
Immunogen:	Recombinant protein corresponding to amino acids of human ATAD2B.
Sequence:	LEVVSFCD SG DKCSSEQKIL LEDQSKEKPE TSTENHGDDL EKLEALECSN NEKLEPGSDV EVKDAELDKE GASKVKKYRK
Isotype:	IgG
Cross-Reactivity:	Human

Target Details

Target:	ATAD2B
Alternative Name:	ATAD2B ( <a href="#">ATAD2B Products</a> )
Background:	Full Gene Name: ATPase family, AAA domain containing 2B

## Target Details

---

Synonyms: KIAA1240,MGC88424

Gene ID: 54454

## Application Details

---

Application Notes: Immunohistochemistry (1:50-1:200)  
Western Blot (1:250-1:500)  
The optimal working dilution should be determined by the end user.

Restrictions: For Research Use only

## Handling

---

Format: Liquid

Buffer: In PBS, pH 7.2 (40 % glycerol, 0.02 % sodium azide)

Preservative: Sodium azide

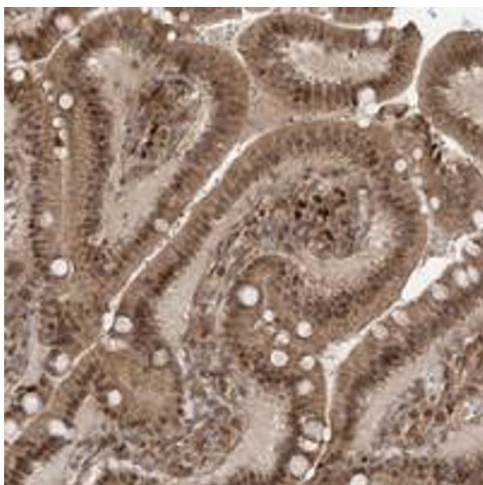
Precaution of Use: This product contains Sodium azide: a POISONOUS AND HAZARDOUS SUBSTANCE which should be handled by trained staff only.

Storage: 4 °C,-20 °C

Storage Comment: Store at 4°C. For long term storage store at -20°C.  
Aliquot to avoid repeated freezing and thawing.

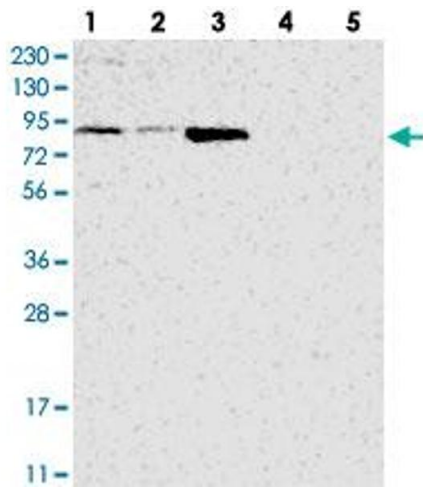
## Images

---



### Immunohistochemistry

**Image 1.** Immunohistochemical staining of human duodenum with ATAD2B polyclonal antibody shows moderate cytoplasmic and nuclear positivity in glandular cells at 1:50-1:200 dilution.



### Western Blotting

**Image 2.** Western blot analysis of Lane 1: RT-4, Lane 2: U-251 MG, Lane 3: Human Plasma, Lane 4: Liver, Lane 5: Tonsil with ATAD2B polyclonal antibody at 1:250-1:500 dilution.