

Datasheet for ABIN5573097
anti-ATF6 antibody (N-Term)

2 Images

[Go to Product page](#)

Overview

Quantity:	50 µg
Target:	ATF6
Binding Specificity:	N-Term
Reactivity:	Human
Host:	Mouse
Clonality:	Monoclonal
Conjugate:	This ATF6 antibody is un-conjugated
Application:	Western Blotting (WB), Immunoprecipitation (IP)

Product Details

Purpose:	Mouse monoclonal antibody raised against partial recombinant ATF6.
Immunogen:	Recombinant His fusion protein corresponding to N-terminus human ATF6.
Clone:	1-7
Isotype:	IgG2a
Cross-Reactivity:	Human

Target Details

Target:	ATF6
Alternative Name:	ATF6 (ATF6 Products)
Background:	Full Gene Name: activating transcription factor 6

Target Details

	Synonyms: ATF6A
Gene ID:	22926
Pathways:	ER-Nucleus Signaling, Unfolded Protein Response

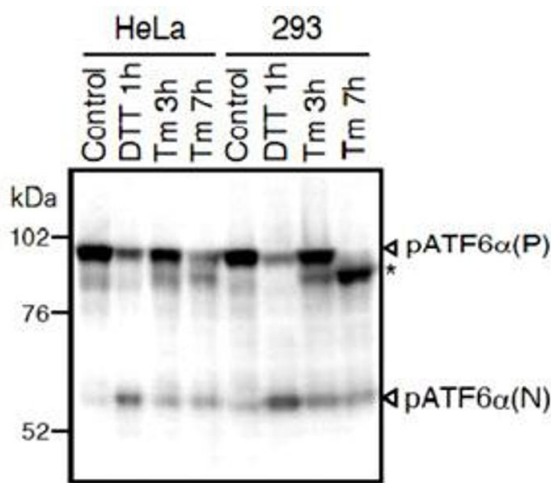
Application Details

Application Notes:	The optimal working dilution should be determined by the end user.
Restrictions:	For Research Use only

Handling

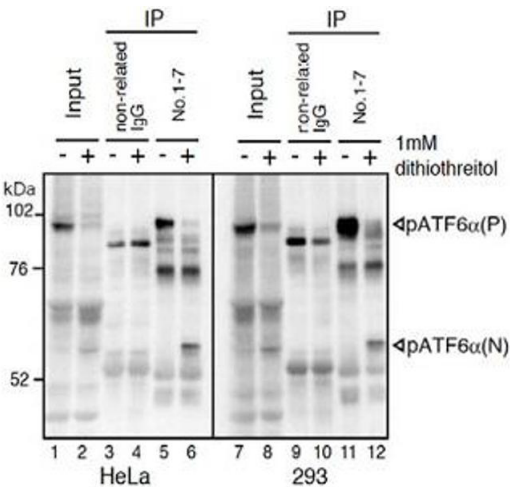
Format:	Liquid
Buffer:	In PBS (50 % glycerol)
Storage:	-20 °C
Storage Comment:	Store at -20°C. Aliquot to avoid repeated freezing and thawing.

Images



Western Blotting

Image 1. Western blot analysis of human cell extracts using ATF6 monoclonal antibody, clone 1-7 . Conversion of pATF6α(P) to pATF6α(N) in DTT- or tunicamycin-treated cells. Tm: 2 ug/mL tunicamycin (inhibitor of N-glycosylation). DTT : 1mM dithiothreitol (reducing reagent). The asterisk denotes an unglycosylated form of pATF6α(P). ATF6α is constitutively expressed as pATF6α(P) (~90-kDa protein), and converted to pATF6α(N) (>50-kDa protein) in ER-stressed cells.



Western Blotting

Image 2. IP-Western blot analysis of human cell extracts using ATF6 monoclonal antibody, clone 1-7 .