



[Go to Product page](#)

Datasheet for ABIN5573194
anti-ATRX antibody (AA 1-33, AA 450-741)

1 Image

Overview

Quantity:	50 µL
Target:	ATRX
Binding Specificity:	AA 1-33, AA 450-741
Reactivity:	Human
Host:	Mouse
Clonality:	Monoclonal
Conjugate:	This ATRX antibody is un-conjugated
Application:	ELISA, Western Blotting (WB), Immunohistochemistry (Paraffin-embedded Sections) (IHC (p))

Product Details

Purpose:	Mouse monoclonal antibody raised against synthetic peptide of human ATRX.
Immunogen:	A mixture of synthetic peptides corresponding to residues within 1-300 and 450-741 of human ATRX.
Clone:	60-1
Isotype:	IgG
Cross-Reactivity:	Human

Target Details

Target:	ATRX
Alternative Name:	ATRX (ATRX Products)

Target Details

Background:	Full Gene Name: alpha thalassemia/mental retardation syndrome X-linked (RAD54 homolog, <i>S. cerevisiae</i>) Synonyms: ATR2,MGC2094,MRXHF1,RAD54,RAD54L,SFM1,SHS,XH2,XNP,ZNF-HX
Gene ID:	546

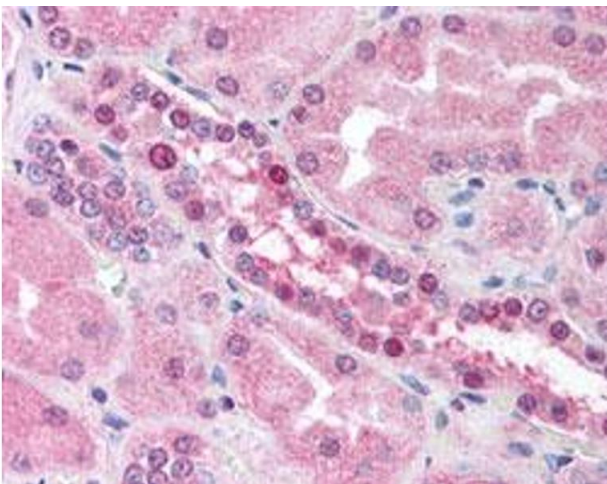
Application Details

Application Notes:	ELISA Immunohistochemistry (Formalin/PFA-fixed paraffin-embedded sections) (5 µg/mL) Western Blot The optimal working dilution should be determined by the end user.
Restrictions:	For Research Use only

Handling

Format:	Liquid
Buffer:	In PBS, pH 7.2.
Storage:	4 °C,-20 °C
Storage Comment:	Store at 4°C. For long term storage store at -20°C. Aliquot to avoid repeated freezing and thawing.

Images



Immunohistochemistry

Image 1. Immunohistochemical staining (Formalin-fixed paraffin-embedded sections) of human kidney with ATRX monoclonal antibody, clone 60.1 at 5 µg/mL working concentration.