

Datasheet for ABIN5573226

anti-AVPR1A antibody (Cytoplasmic Domain)[Go to Product page](#)**1** Image

Overview

Quantity:	50 µg
Target:	AVPR1A
Binding Specificity:	Cytoplasmic Domain
Reactivity:	Human
Host:	Rabbit
Clonality:	Polyclonal
Conjugate:	This AVPR1A antibody is un-conjugated
Application:	Immunohistochemistry (Paraffin-embedded Sections) (IHC (p))

Product Details

Purpose:	Rabbit polyclonal antibody raised against synthetic peptide of AVPR1A.
Immunogen:	A synthetic peptide corresponding to 18 amino acids at cytoplasmic domain of human AVPR1A.
Specificity:	BLAST analysis of the peptide immunogen showed no homology with other human proteins.
Cross-Reactivity:	Human
Cross-Reactivity (Details):	BLAST analysis of the peptide immunogen showed no homology with other human proteins.

Target Details

Target:	AVPR1A
Alternative Name:	AVPR1A (AVPR1A Products)

Target Details

Background:	Full Gene Name: arginine vasopressin receptor 1A Synonyms: AVPR1
Gene ID:	552
Pathways:	Regulation of Systemic Arterial Blood Pressure by Hormones , Response to Water Deprivation , Regulation of Carbohydrate Metabolic Process

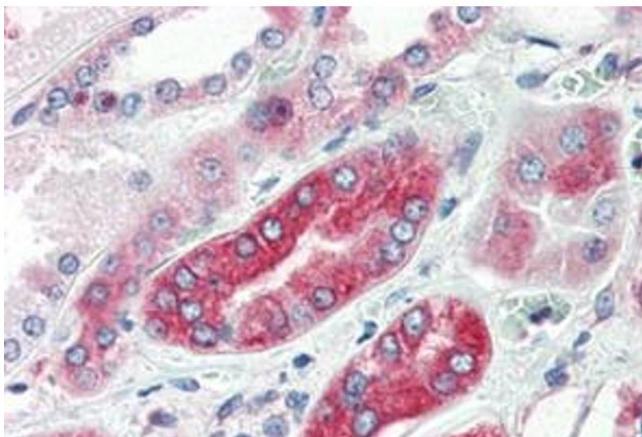
Application Details

Application Notes:	Immunohistochemistry (Formalin/PFA-fixed paraffin-embedded sections) (2.5 µg/mL) The optimal working dilution should be determined by the end user.
Restrictions:	For Research Use only

Handling

Format:	Liquid
Buffer:	In PBS (0.09 % sodium azide)
Preservative:	Sodium azide
Precaution of Use:	This product contains Sodium azide: a POISONOUS AND HAZARDOUS SUBSTANCE which should be handled by trained staff only.
Storage:	4 °C,-80 °C
Storage Comment:	Store at 4°C. For long term storage store at -80°C. Aliquot to avoid repeated freezing and thawing.

Images



Immunohistochemistry

Image 1. Immunohistochemical staining of formalin-fixed, paraffin-embedded human kidney tissue after heat-induced antigen retrieval. Using AVPR1A polyclonal antibody .