

Datasheet for ABIN5573233  
**anti-AVPR2 antibody (C-Term)**[Go to Product page](#)

## 1 Image

## Overview

Quantity:	50 µg
Target:	AVPR2
Binding Specificity:	C-Term
Reactivity:	Human, Monkey, Gorilla
Host:	Rabbit
Clonality:	Polyclonal
Conjugate:	This AVPR2 antibody is un-conjugated
Application:	Immunohistochemistry (Paraffin-embedded Sections) (IHC (p))

## Product Details

Purpose:	Rabbit polyclonal antibody raised against synthetic peptide of AVPR2.
Immunogen:	A synthetic peptide corresponding to 15 amino acids at C-terminus of human AVPR2.
Specificity:	BLAST analysis of the peptide immunogen showed no homology with other human proteins.
Cross-Reactivity:	Gorilla, Human, Monkey
Cross-Reactivity (Details):	BLAST analysis of the peptide immunogen showed no homology with other human proteins.

## Target Details

Target:	AVPR2
Alternative Name:	AVPR2 ( <a href="#">AVPR2 Products</a> )
Background:	Full Gene Name: arginine vasopressin receptor 2

## Target Details

	Synonyms: ADHR,DI1,DIR,DIR3,MGC126533,MGC138386,NDI,V2R
Gene ID:	554
Pathways:	<a href="#">cAMP Metabolic Process</a>

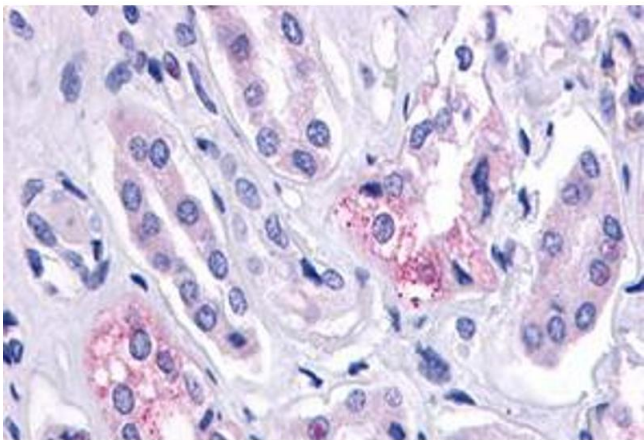
## Application Details

Application Notes:	Immunohistochemistry (Formalin/PFA-fixed paraffin-embedded sections) (3-6 µg/mL) The optimal working dilution should be determined by the end user.
Restrictions:	For Research Use only

## Handling

Format:	Liquid
Buffer:	In PBS (0.09 % sodium azide)
Preservative:	Sodium azide
Precaution of Use:	This product contains Sodium azide: a POISONOUS AND HAZARDOUS SUBSTANCE which should be handled by trained staff only.
Storage:	4 °C,-80 °C
Storage Comment:	Store at 4°C. For long term storage store at -80°C. Aliquot to avoid repeated freezing and thawing.

## Images



### Immunohistochemistry

**Image 1.** Immunohistochemical staining of formalin-fixed, paraffin-embedded human kidney, renal tubules tissue after heat-induced antigen retrieval. Using AVPR2 polyclonal antibody .