



[Go to Product page](#)

Datasheet for ABIN5573241

anti-AZI1 antibody

2 Images

Overview

Quantity:	100 µg
Target:	AZI1
Reactivity:	Human, Rat, Mouse
Host:	Rabbit
Clonality:	Polyclonal
Conjugate:	This AZI1 antibody is un-conjugated
Application:	Western Blotting (WB), ELISA, Immunohistochemistry (Paraffin-embedded Sections) (IHC (p))

Product Details

Purpose:	Rabbit polyclonal antibody raised against synthetic peptide of AZI1.
Immunogen:	A synthetic peptide corresponding to internal of human AZI1.
Specificity:	This antibody detects endogenous levels of total AZI1 protein.
Cross-Reactivity:	Human, Mouse, Rat

Target Details

Target:	AZI1
Alternative Name:	AZI1 (AZI1 Products)
Background:	Full Gene Name: 5-azacytidine induced 1 Synonyms: AZ1,Cep131
Gene ID:	22994

Target Details

Pathways: [M Phase](#)

Application Details

Application Notes: Western Blot (1:500-1:1000)
Immunohistochemistry (1:50-1:100)
ELISA (1:40000)
The optimal working dilution should be determined by the end user.

Restrictions: For Research Use only

Handling

Format: Liquid

Buffer: In PBS, pH 7.4 (150 mM NaCl, 0.02 % sodium azide, 50 % glycerol)

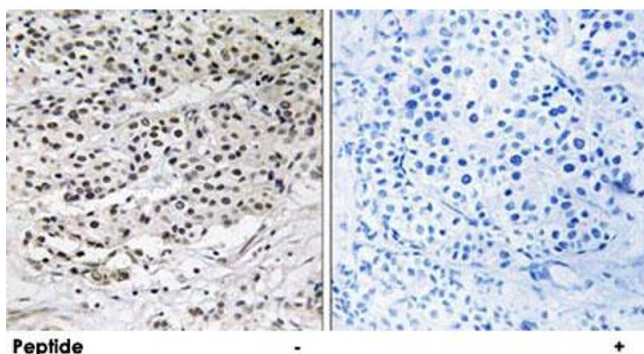
Preservative: Sodium azide

Precaution of Use: This product contains Sodium azide: a POISONOUS AND HAZARDOUS SUBSTANCE which should be handled by trained staff only.

Storage: -20 °C

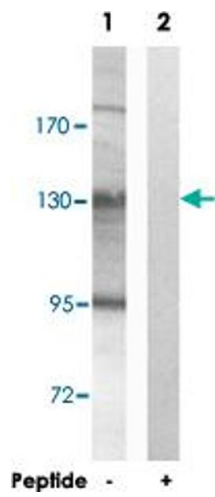
Storage Comment: Store at -20°C.
Aliquot to avoid repeated freezing and thawing.

Images



Immunohistochemistry

Image 1. Immunohistochemistry analysis of paraffin-embedded human breast carcinoma tissue using AZI1 polyclonal antibody . Peptide



Western Blotting

Image 2. Western blot analysis of extracts from HUVEC cells, using AZI1 polyclonal antibody . Peptide