

Datasheet for ABIN5573337

**anti-BTLA antibody****2** Images[Go to Product page](#)

## Overview

|              |  |
|--------------|--|
| Quantity:    | 50 µL  |
| Target:      | BTLA   |
| Reactivity:  | Human  |
| Host:        | Mouse  |
| Clonality:   | Monoclonal   |
| Conjugate:   | This BTLA antibody is un-conjugated  |
| Application: | Western Blotting (WB), Immunohistochemistry (Paraffin-embedded Sections) (IHC (p)) |

## Product Details

|                   |  |
|-------------------|--|
| Purpose:          | Mouse monoclonal antibody raised against full length recombinant human BTLA. |
| Immunogen:        | Recombinant protein corresponding to full length human BTLA.                 |
| Clone:            | 4C2  |
| Isotype:          | IgG2b  |
| Cross-Reactivity: | Human  |

## Target Details

|                   |   |
|-------------------|---|
| Target:           | BTLA  |
| Alternative Name: | BTLA ( <a href="#">BTLA Products</a> )  |
| Background:       | Full Gene Name: B and T lymphocyte associated<br>Synonyms: BTLA1,CD272,FLJ16065,MGC129743 |

## Target Details

|           |   |
|-----------|---|
| Gene ID:  | 151888                                    |
| Pathways: | <a href="#">Cancer Immune Checkpoints</a> |

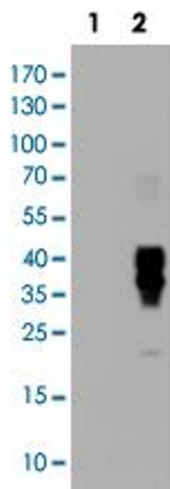
## Application Details

|                    |  |
|--------------------|--|
| Application Notes: | Immunohistochemistry (Formalin/PFA-fixed paraffin-embedded sections) (10 µg/mL)<br>Western Blot (1:2000)<br>The optimal working dilution should be determined by the end user. |
| Restrictions:      | For Research Use only  |

## Handling

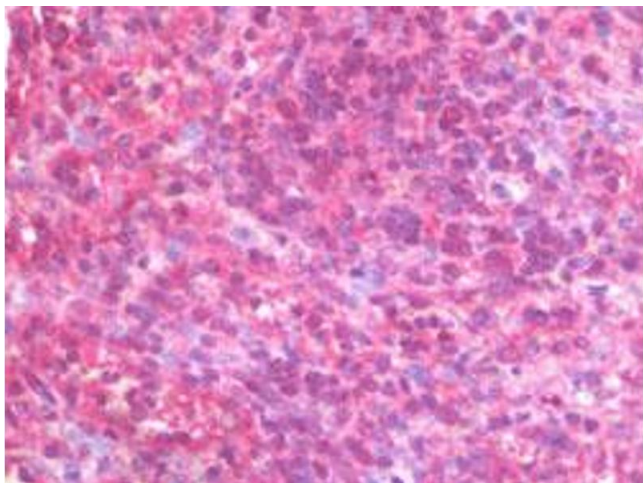
|                    |  |
|--------------------|--|
| Format:            | Liquid   |
| Buffer:            | In PBS, pH 7.3 (50 % glycerol, 1 % BSA, 0.02 % sodium azide).  |
| Preservative:      | Sodium azide   |
| Precaution of Use: | This product contains Sodium azide: a POISONOUS AND HAZARDOUS SUBSTANCE which should be handled by trained staff only. |
| Storage:           | -20 °C   |
| Storage Comment:   | Store at -20°C.<br>Aliquot to avoid repeated freezing and thawing.   |

## Images



### Western Blotting

**Image 1.** Western Blot analysis of HEK293T cells transfected with the Lane 1: pCMV6-ENTRY control and Lane 2: pCMV6-ENTRY BTLA cDNA for 48 hrs (5 ug/lane) using BTLA monoclonal antibody, clone 4C2.



#### Immunohistochemistry

**Image 2.** Immunohistochemical staining (Formalin-fixed paraffin-embedded sections) of human spleen with BTLA monoclonal antibody, clone 4C2 at 10 ug/mL working concentration.