

Datasheet for ABIN5573362 anti-C3AR1 antibody (Extracellular Domain)

[Go to Product page](#)

1 Image

Overview

Quantity:	50 µg
Target:	C3AR1
Binding Specificity:	Extracellular Domain
Reactivity:	Human
Host:	Rabbit
Clonality:	Polyclonal
Conjugate:	This C3AR1 antibody is un-conjugated
Application:	Immunohistochemistry (Paraffin-embedded Sections) (IHC (p))

Product Details

Purpose:	Rabbit polyclonal antibody raised against synthetic peptide of C3AR1.
Immunogen:	A synthetic peptide corresponding to 20 amino acids at extracellular domain of human C3AR1.
Specificity:	BLAST analysis of the peptide immunogen showed no homology with other human proteins, except ADRA1A (40 %).
Cross-Reactivity:	Human
Cross-Reactivity (Details):	BLAST analysis of the peptide immunogen showed no homology with other human proteins, except ADRA1A (40 %).

Target Details

Target:	C3AR1
---------	-------

Target Details

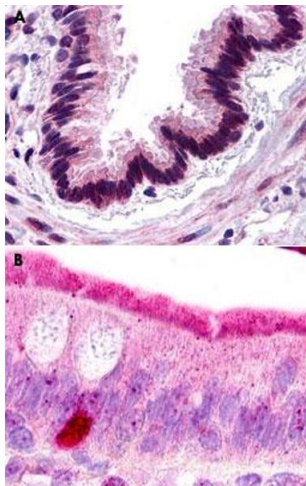
Alternative Name:	C3AR1 (C3AR1 Products)
Background:	Full Gene Name: complement component 3a receptor 1 Synonyms: AZ3B,C3AR,HNFAG09
Gene ID:	719
Pathways:	Complement System

Application Details

Application Notes:	Immunohistochemistry (Formalin/PFA-fixed paraffin-embedded sections) (17.3 µg/mL) The optimal working dilution should be determined by the end user.
Restrictions:	For Research Use only

Handling

Format:	Liquid
Buffer:	In PBS (0.09 % sodium azide)
Preservative:	Sodium azide
Precaution of Use:	This product contains Sodium azide: a POISONOUS AND HAZARDOUS SUBSTANCE which should be handled by trained staff only.
Storage:	4 °C,-80 °C
Storage Comment:	Store at 4°C. For long term storage store at -80°C. Aliquot to avoid repeated freezing and thawing.



Immunohistochemistry

Image 1. Immunohistochemical staining of formalin-fixed paraffin-embedded human lung, respiratory epithelium (A) and human small intestine (B) with C3AR1 polyclonal antibody .