



[Go to Product page](#)

Datasheet for ABIN5573377  
**anti-FAM208A antibody**

1 Image

### Overview

Quantity:	100 µL
Target:	FAM208A
Reactivity:	Human
Host:	Rabbit
Clonality:	Polyclonal
Conjugate:	This FAM208A antibody is un-conjugated
Application:	Immunohistochemistry (Paraffin-embedded Sections) (IHC (p))

### Product Details

Purpose:	Rabbit polyclonal antibody raised against recombinant C3orf63.
Immunogen:	Recombinant protein corresponding to amino acids of recombinant C3orf63.
Sequence:	TIIKASAKG GNLPPVSPND SGAKIASNPL ERHVIPVSSS DFNNKHLLLEP LCSDPLKDTN SDEQHSTSAL TEVEMNQPQH ATELMVTS DH IVPGDMAREP VEETTKSPSD VNISAQPALS N
Isotype:	IgG
Cross-Reactivity:	Human

### Target Details

Target:	FAM208A
Alternative Name:	C3orf63 ( <a href="#">FAM208A Products</a> )
Background:	Full Gene Name: chromosome 3 open reading frame 63

## Target Details

Synonyms: DKFZp686C2456,KIAA1105,RAP140,se89-1

Gene ID: 23272

## Application Details

Application Notes: Immunohistochemistry (1:500-1:1000)  
The optimal working dilution should be determined by the end user.

Restrictions: For Research Use only

## Handling

Format: Liquid

Buffer: In PBS, pH 7.2 (40 % glycerol, 0.02 % sodium azide)

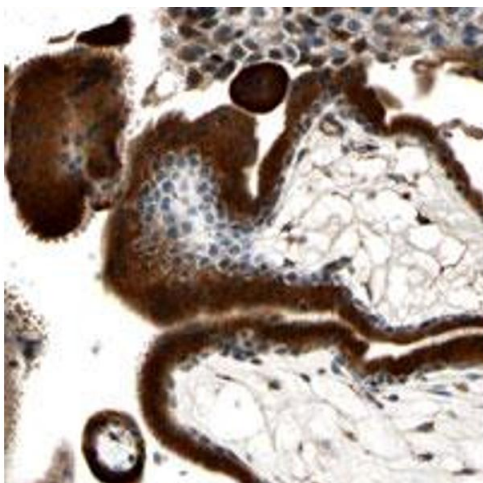
Preservative: Sodium azide

Precaution of Use: This product contains Sodium azide: a POISONOUS AND HAZARDOUS SUBSTANCE which should be handled by trained staff only.

Storage: 4 °C,-20 °C

Storage Comment: Store at 4°C. For long term storage store at -20°C.  
Aliquot to avoid repeated freezing and thawing.

## Images



### Immunohistochemistry

**Image 1.** Immunohistochemical staining of human placenta with C3orf63 polyclonal antibody shows strong cytoplasmic positivity in trophoblastic cells at 1:500-1:1000 dilution.