

Datasheet for ABIN5573414

anti-C6 antibody[Go to Product page](#)**1** Image

Overview

Quantity:	50 µg
Target:	C6
Reactivity:	Human
Host:	Mouse
Clonality:	Monoclonal
Conjugate:	This C6 antibody is un-conjugated
Application:	ELISA, Flow Cytometry (FACS), Immunohistochemistry (Paraffin-embedded Sections) (IHC (p))

Product Details

Purpose:	Mouse monoclonal antibody raised against human C6.
Immunogen:	Purified human C6.
Clone:	056B-214-2-4-2
Isotype:	IgG1
Cross-Reactivity:	Human

Target Details

Target:	C6
Alternative Name:	C6 (C6 Products)
Background:	Full Gene Name: complement component 6
Gene ID:	729

Application Details

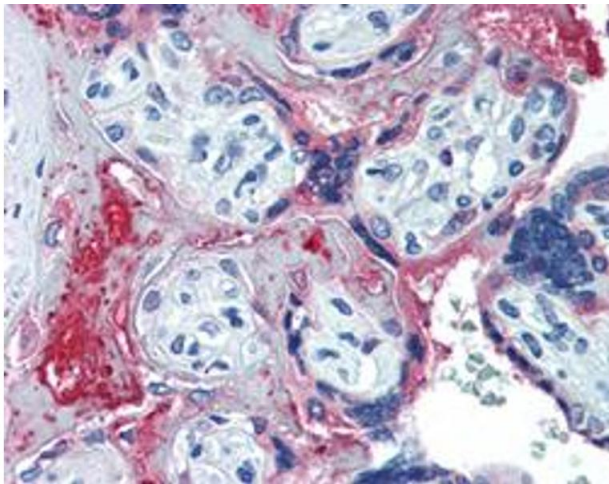
Application Notes:	ELISA Flow Cytometry Immunohistochemistry (Formalin/PFA-fixed paraffin-embedded sections) (10 µg/mL) The optimal working dilution should be determined by the end user.
--------------------	--

Restrictions:	For Research Use only
---------------	-----------------------

Handling

Format:	Liquid
Buffer:	In BBS (0.09 % sodium azide).
Preservative:	Sodium azide
Precaution of Use:	This product contains Sodium azide: a POISONOUS AND HAZARDOUS SUBSTANCE which should be handled by trained staff only.
Storage:	4 °C, -20 °C
Storage Comment:	Store at 4°C. For long term storage store at -20°C. Aliquot to avoid repeated freezing and thawing.

Images



Immunohistochemistry

Image 1. Immunohistochemical staining (Formalin-fixed paraffin-embedded sections) of human placenta with C6 monoclonal antibody, clone 056B-214.2.4.2 at 10 µg/mL working concentration.