



[Go to Product page](#)

Datasheet for ABIN5573423
anti-C6ORF118 antibody

1 Image

Overview

Quantity:	100 µL
Target:	C6ORF118
Reactivity:	Human
Host:	Rabbit
Clonality:	Polyclonal
Conjugate:	This C6ORF118 antibody is un-conjugated
Application:	Immunohistochemistry (Paraffin-embedded Sections) (IHC (p))

Product Details

Purpose:	Rabbit polyclonal antibody raised against recombinant C6orf118.
Immunogen:	Recombinant protein corresponding to amino acids of human C6orf118.
Sequence:	CNSSLIFGDL LKKVKDEYEL YMATLLESQP AAQYEALLAQ LKALGQRPVK TADMDLAREE LRMLVTATKA AL
Isotype:	IgG
Cross-Reactivity:	Human

Target Details

Target:	C6ORF118
Alternative Name:	C6orf118 (C6ORF118 Products)
Background:	Full Gene Name: chromosome 6 open reading frame 118

Target Details

Synonyms: MGC23884,bA85G2.1,dJ416F21.2

Gene ID: 168090

Application Details

Application Notes: Immunohistochemistry (1:50-1:200)
The optimal working dilution should be determined by the end user.

Restrictions: For Research Use only

Handling

Format: Liquid

Buffer: In PBS, pH 7.2 (40 % glycerol, 0.02 % sodium azide)

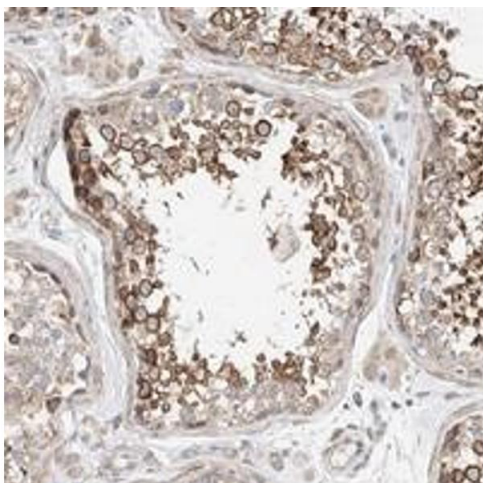
Preservative: Sodium azide

Precaution of Use: This product contains Sodium azide: a POISONOUS AND HAZARDOUS SUBSTANCE which should be handled by trained staff only.

Storage: 4 °C,-20 °C

Storage Comment: Store at 4°C. For long term storage store at -20°C.
Aliquot to avoid repeated freezing and thawing.

Images



Immunohistochemistry

Image 1. Immunohistochemical staining of human testis with C6orf118 polyclonal antibody shows strong cytoplasmic positivity in subsets of seminiferous duct cells at 1:50-1:200 dilution.