



Datasheet for ABIN5573452  
**anti-C7ORF25 antibody**



[Go to Product page](#)

1 Image

### Overview

|              |   |
|--------------|---|
| Quantity:    | 100 µL  |
| Target:      | C7ORF25   |
| Reactivity:  | Human   |
| Host:        | Rabbit  |
| Clonality:   | Polyclonal  |
| Conjugate:   | This C7ORF25 antibody is un-conjugated                      |
| Application: | Immunohistochemistry (Paraffin-embedded Sections) (IHC (p)) |

### Product Details

|                   |  |
|-------------------|--|
| Purpose:          | Rabbit polyclonal antibody raised against recombinant C7orf25.   |
| Immunogen:        | Recombinant protein corresponding to amino acids of human C7orf25.   |
| Sequence:         | GPGERERATV LIKRINVVPD QPSERALRLV ASSKINSRSL TIFGTGDTLK AITMTANS GF<br>VRAANNQGVK FSVFIHQPRA LTESKEALAT PLPKDYTTD |
| Isotype:          | IgG  |
| Cross-Reactivity: | Human  |

### Target Details

|                   |  |
|-------------------|--|
| Target:           | C7ORF25  |
| Alternative Name: | C7orf25 ( <a href="#">C7ORF25 Products</a> )       |
| Background:       | Full Gene Name: chromosome 7 open reading frame 25 |

## Target Details

Synonyms: FLJ21167,MGC2821

Gene ID: 79020

## Application Details

Application Notes: Immunohistochemistry (1:200-1:500)  
The optimal working dilution should be determined by the end user.

Restrictions: For Research Use only

## Handling

Format: Liquid

Buffer: In PBS, pH 7.2 (40 % glycerol, 0.02 % sodium azide)

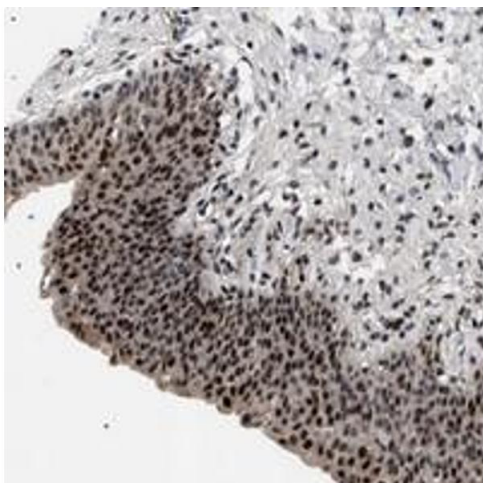
Preservative: Sodium azide

Precaution of Use: This product contains Sodium azide: a POISONOUS AND HAZARDOUS SUBSTANCE which should be handled by trained staff only.

Storage: 4 °C,-20 °C

Storage Comment: Store at 4°C. For long term storage store at -20°C.  
Aliquot to avoid repeated freezing and thawing.

## Images



### Immunohistochemistry

**Image 1.** Immunohistochemical staining of human urinary bladder with C7orf25 polyclonal antibody shows strong nuclear positivity in urothelial cells.