



Datasheet for ABIN5573547

## Recombinant anti-CA 19-9 antibody



[Go to Product page](#)

### 1 Image

#### Overview

Quantity:	100 µg
Target:	CA 19-9
Reactivity:	Human
Host:	Rabbit
Antibody Type:	Recombinant Antibody
Clonality:	Monoclonal
Conjugate:	This CA 19-9 antibody is un-conjugated
Application:	Flow Cytometry (FACS), Immunofluorescence (IF), Immunohistochemistry (Paraffin-embedded Sections) (IHC (p))

#### Product Details

Purpose:	Recombinant rabbit monoclonal antibody raised against human CA19-9.
Immunogen:	Original antibody is raised against purified human CA19-9 protein.
Clone:	CA19-9-1390R
Isotype:	IgG
Cross-Reactivity:	Human

#### Target Details

Target:	CA 19-9
Alternative Name:	CA19-9 ( <a href="#">CA 19-9 Products</a> )

## Application Details

---

Application Notes:                   Flow Cytometry (0.5-1 µg/million cells)  
  Immunofluorescence (0.5-1 µg/mL)  
  Immunohistochemistry (Formalin/PFA-fixed paraffin-embedded sections) (5-10 µg/mL)  
  The optimal working dilution should be determined by the end user.

---

Restrictions:                       For Research Use only

---

## Handling

---

Format:                               Liquid

---

Buffer:                               In 10 mM PBS (0.05 % BSA and 0.05 % azide).

---

Preservative:                       Sodium azide

---

Precaution of Use:                This product contains Sodium azide: a POISONOUS AND HAZARDOUS SUBSTANCE which should be handled by trained staff only.

---

Storage:                              4 °C

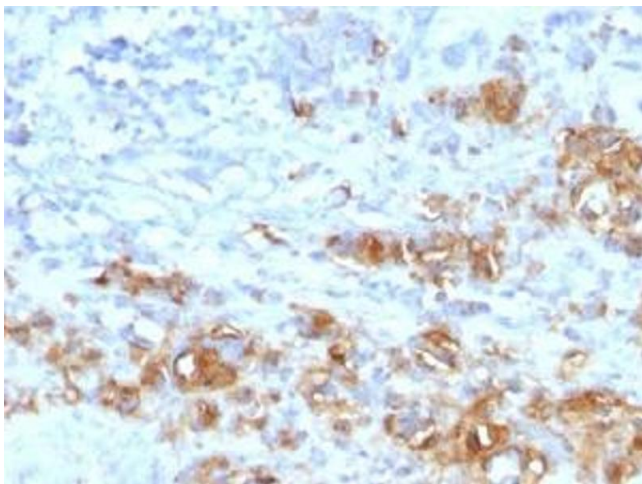
---

Storage Comment:                 Store at 4°C.

---

## Images

---



### Immunohistochemistry

**Image 1.** Immunohistochemical staining (Formalin-fixed paraffin-embedded sections) of human gastric carcinoma with CA19-9 recombinant monoclonal antibody, clone CA19.9/1390R .