

Datasheet for ABIN5573635 anti-CALCRL antibody (Cytoplasmic Domain)

[Go to Product page](#)

1 Image

Overview

Quantity:	50 µg
Target:	CALCRL
Binding Specificity:	Cytoplasmic Domain
Reactivity:	Human, Rat, Cow, Dog, Horse, Rabbit, Goat, Monkey, Hamster, Pig, Xenopus laevis, Gorilla, Orang-Utan
Host:	Rabbit
Clonality:	Polyclonal
Conjugate:	This CALCRL antibody is un-conjugated
Application:	Immunohistochemistry (Paraffin-embedded Sections) (IHC (p))

Product Details

Purpose:	Rabbit polyclonal antibody raised against synthetic peptide of CALCRL.
Immunogen:	A synthetic peptide corresponding to cytoplasmic domain of human CALCRL.
Specificity:	BLAST analysis of the peptide immunogen showed no homology with other human proteins, except CALCRL (56 %).
Cross-Reactivity:	Cow, Dog, Goat, Gorilla, Hamster, Horse, Human, Monkey, Orang-Utan, Pig, Rabbit, Rat, Xenopus laevis
Cross-Reactivity (Details):	BLAST analysis of the peptide immunogen showed no homology with other human proteins, except CALCRL (56 %).

Target Details

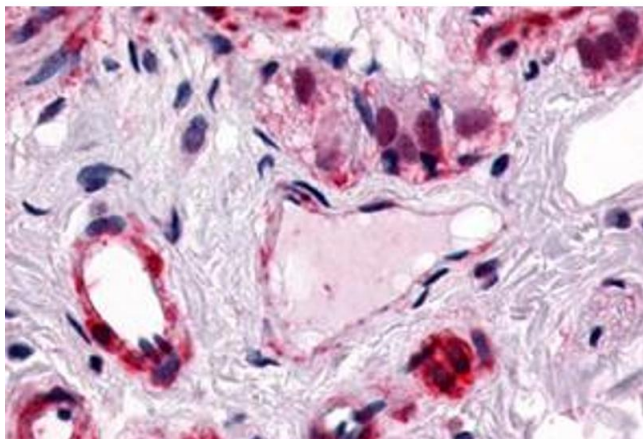
Target:	CALCRL
Alternative Name:	CALCRL (CALCRL Products)
Background:	Full Gene Name: calcitonin receptor-like Synonyms: CGRPR,CRLR
Gene ID:	10203
Pathways:	cAMP Metabolic Process

Application Details

Application Notes:	Immunohistochemistry (Formalin/PFA-fixed paraffin-embedded sections) (34 µg/mL) The optimal working dilution should be determined by the end user.
Restrictions:	For Research Use only

Handling

Format:	Liquid
Buffer:	In PBS (0.09 % sodium azide)
Preservative:	Sodium azide
Precaution of Use:	This product contains Sodium azide: a POISONOUS AND HAZARDOUS SUBSTANCE which should be handled by trained staff only.
Storage:	4 °C,-80 °C
Storage Comment:	Store at 4°C. For long term storage store at -80°C. Aliquot to avoid repeated freezing and thawing.



Immunohistochemistry

Image 1. Immunohistochemical staining of human colon, submucosal plexus and submucosal vessels with CALCRL polyclonal antibody . Immunohistochemistry of formalin-fixed, paraffin-embedded tissue after heat-induced antigen retrieval.