



[Go to Product page](#)

Datasheet for ABIN5573728
anti-CARD10 antibody (C-Term)

2 Images

Overview

Quantity:	100 µg
Target:	CARD10
Binding Specificity:	C-Term
Reactivity:	Human, Mouse, Rat
Host:	Rabbit
Clonality:	Polyclonal
Conjugate:	This CARD10 antibody is un-conjugated
Application:	Western Blotting (WB), ELISA, Immunofluorescence (IF)

Product Details

Purpose:	Rabbit polyclonal antibody raised against synthetic peptide of CARD10.
Immunogen:	A synthetic peptide corresponding to 15 amino acids at C-terminus of human CARD10.
Cross-Reactivity:	Human, Mouse, Rat

Target Details

Target:	CARD10
Alternative Name:	CARD10 (CARD10 Products)
Background:	Full Gene Name: caspase recruitment domain family, member 10 Synonyms: BIMP1,CARMA3,MGC142219
Gene ID:	29775

Target Details

Pathways: [S100 Proteins](#)

Application Details

Application Notes: ELISA (1:5000-1:20000)
Western Blot (1:200-1:500)
Immunofluorescence (1:50-1:100)
The optimal working dilution should be determined by the end user.

Restrictions: For Research Use only

Handling

Format: Liquid

Buffer: In buffer containing 0.02 % sodium azide

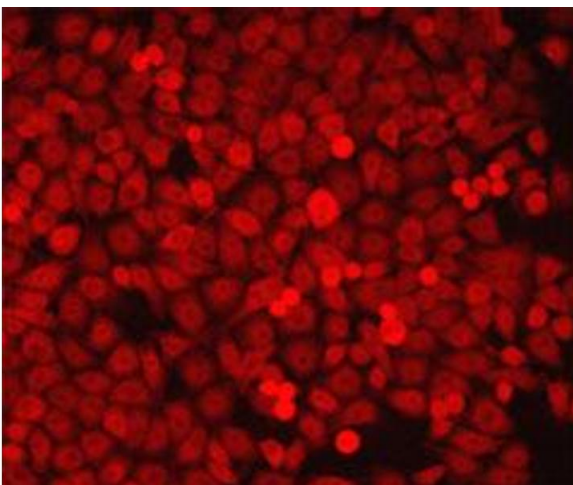
Preservative: Sodium azide

Precaution of Use: This product contains Sodium azide: a POISONOUS AND HAZARDOUS SUBSTANCE which should be handled by trained staff only.

Storage: 4 °C,-20 °C

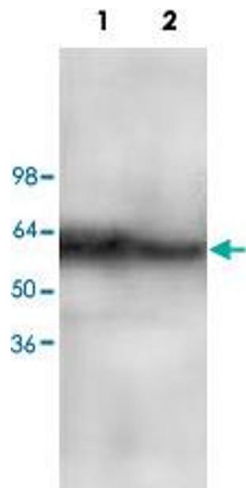
Storage Comment: Store at 4°C for three months. For long term storage store at -20°C.
Aliquot to avoid repeated freezing and thawing.

Images



Immunofluorescence

Image 1. Immunofluorescent staining of HeLa cells showing cytoplasmic staining with CARD10 polyclonal antibody at 1 : 100 dilution.



Western Blotting

Image 2. Western blot analysis of Jurkat (Lane 1) and MCF-7 (Lane 2) cell lysate with CARD10 polyclonal antibody at 1 : 200 dilution.