

Datasheet for ABIN5573825  
**anti-CATSPER2 antibody (N-Term)**[Go to Product page](#)

## 2 Images

## Overview

Quantity:	100 µL
Target:	CATSPER2
Binding Specificity:	N-Term
Reactivity:	Human
Host:	Rabbit
Clonality:	Polyclonal
Conjugate:	This CATSPER2 antibody is un-conjugated
Application:	Western Blotting (WB), Immunohistochemistry (Paraffin-embedded Sections) (IHC (p))

## Product Details

Purpose:	Rabbit polyclonal antibody raised against synthetic peptide of human CATSPER2.
Immunogen:	A synthetic peptide corresponding to N-terminus of human CATSPER2.
Sequence:	HLQGLSQAVP RHTIRELLDP SRQKKLVLGD QHQLVRFSIK PQRIEQISHA
Cross-Reactivity:	Human

## Target Details

Target:	CATSPER2
Alternative Name:	CATSPER2 ( <a href="#">CATSPER2 Products</a> )
Background:	Full Gene Name: cation channel, sperm associated 2 Synonyms: MGC33346

## Target Details

Gene ID: 117155

## Application Details

Application Notes: Immunohistochemistry (Formalin/PFA-fixed paraffin-embedded sections) (4-8 µg/mL)  
Western Blot (1.25 µg/mL)  
The optimal working dilution should be determined by the end user.

Restrictions: For Research Use only

## Handling

Format: Liquid

Buffer: In PBS (2 % sucrose, 0.09 % sodium azide).

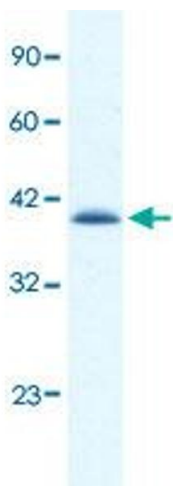
Preservative: Sodium azide

Precaution of Use: This product contains Sodium azide: a POISONOUS AND HAZARDOUS SUBSTANCE which should be handled by trained staff only.

Storage: 4 °C, -20 °C

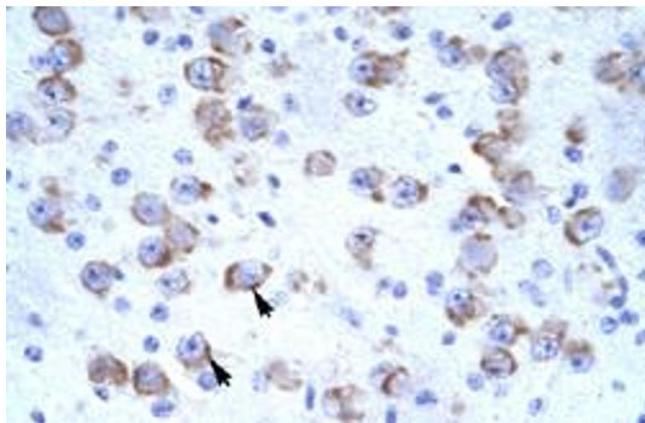
Storage Comment: Store at 4°C. For long term storage store at -20°C.  
Aliquot to avoid repeated freezing and thawing.

## Images



### Western Blotting

**Image 1.** Western Blot analysis of Jurkat cell lysate with CATSPER2 polyclonal antibody at 1.25 µg/mL working concentration.



#### Immunohistochemistry

**Image 2.** Immunohistochemical staining (Formalin-fixed paraffin-embedded sections) of human brain with CATSPER2 polyclonal antibody at 4-8 ug/mL working concentration.