

Datasheet for ABIN5573851

**anti-CBR1 antibody****2** Images[Go to Product page](#)

## Overview

Quantity:	50 µL
Target:	CBR1
Reactivity:	Human
Host:	Mouse
Clonality:	Monoclonal
Conjugate:	This CBR1 antibody is un-conjugated
Application:	Western Blotting (WB), ELISA, Immunohistochemistry (Paraffin-embedded Sections) (IHC (p))

## Product Details

Purpose:	Mouse monoclonal antibody raised against human CBR1.
Immunogen:	Recombinant protein corresponding to human CBR1.
Clone:	AT4E12
Isotype:	IgG2a
Cross-Reactivity:	Human

## Target Details

Target:	CBR1
Alternative Name:	CBR1 ( <a href="#">CBR1 Products</a> )
Background:	Full Gene Name: carbonyl reductase 1 Synonyms: CBR,SDR21C1,hCBR1

## Target Details

Gene ID: 873

## Application Details

Application Notes: ELISA  
Immunohistochemistry (Formalin/PFA-fixed paraffin-embedded sections) (10 µg/mL)  
Western Blot (1:500-1:1000)  
The optimal working dilution should be determined by the end user.

Restrictions: For Research Use only

## Handling

Format: Liquid

Buffer: In PBS, pH 7.4 (0.09 % sodium azide).

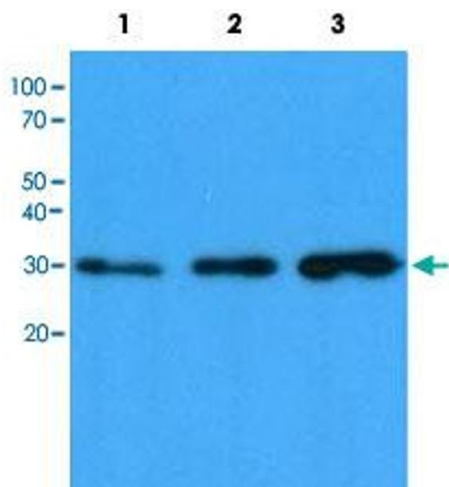
Preservative: Sodium azide

Precaution of Use: This product contains Sodium azide: a POISONOUS AND HAZARDOUS SUBSTANCE which should be handled by trained staff only.

Storage: 4 °C,-20 °C

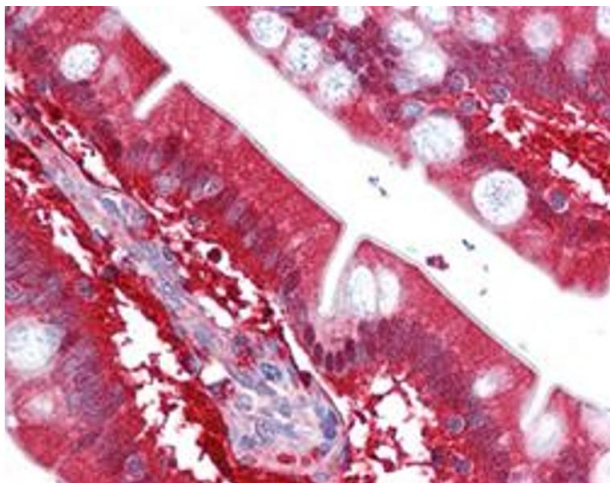
Storage Comment: Store at 4°C. For long term storage store at -20°C.  
Aliquot to avoid repeated freezing and thawing.

## Images



### Western Blotting

**Image 1.** Western blot analysis of Lane 1: HeLa cell lysate, Lane 2: HepG2 cell lysate and Lane 3: 293T cell lysate with CBR1 monoclonal antibody, clone AT4E12 at 1:1000 dilution followed by HRP-conjugated goat anti-mouse secondary antibody and visualized by ECL detection system.



#### Immunohistochemistry

**Image 2.** Immunohistochemical staining (Formalin-fixed paraffin-embedded sections) of human small intestine with CBR1 monoclonal antibody, clone AT4E12 at 10 ug/mL working concentration.